

# HDMI MULTIVIEWER

**MV-H2-0401-10**

4K60 MultiView & KVM Switch with  
AVoIP Integration

Seamless MultiView & KVM Control  
in One Powerful Device

# NETVIO



# PRODUCT **INTRO**

## **MV-H2-0401-10**

### 4K60 MultiView & KVM Switch with AVoIP Integration

### Seamless MultiView & KVM Control in One Powerful Device

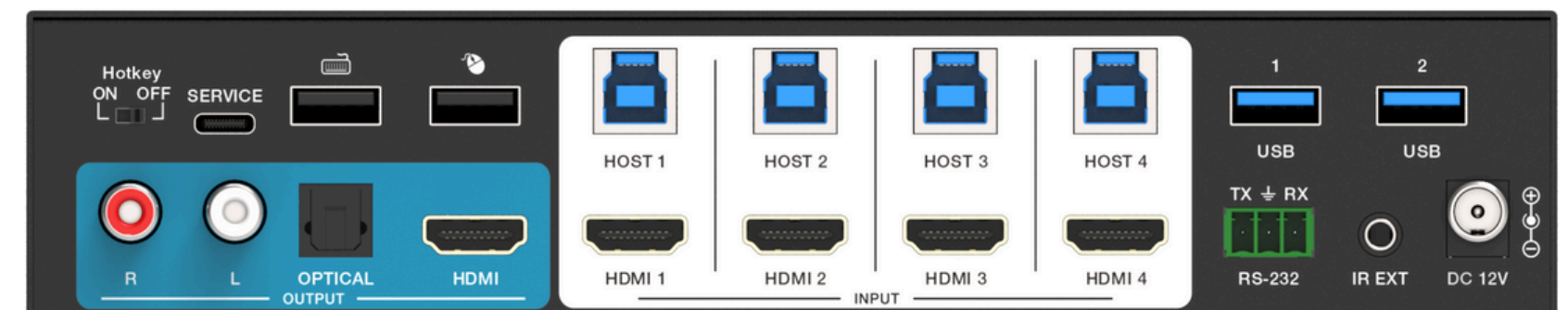
The Netvio MV-H2-0401-10 is a versatile 4K60 MultiView processor and KVM switch, designed for both standalone operation and seamless integration with Netvio JP4 AVoIP systems.

In standalone mode, it connects up to four PCs to a single display, allowing unified keyboard/mouse control and instant switching via hotkeys, IR remote, or OSD menus.

When paired with JP4 AVoIP encoders, it unlocks advanced MultiView layouts (PiP, PBP, Quad) on a single UHD display. Fully compatible with NetvioGo AppBuilder, Crestron, and Q-Sys drivers, it offers ultimate flexibility for control and integration.

With support for 4K@60Hz (4:4:4), 18Gbps HDMI bandwidth, and high-definition audio formats, the MV-H2-0401-10 delivers professional-grade performance for control rooms, conference spaces, and AV environments.

# NETVIO



# PRODUCT INFO

MV-H2-0401-10

## 4K60 MultiView & KVM Switch with AVoIP Integration

Seamless MultiView & KVM Control in One Powerful Device

### Features

- Fully compliant with HDMI 2.0b, HDCP 2.2, and HDCP 1.x
- Supports 18Gbps video bandwidth for uncompressed 4K content
- Resolutions up to 4K@60Hz (4:4:4) supported on both input and output
- Compatible with LPCM, AC3, DD+, DTS, DTS-HD – up to 7.1 channels of high-definition audio
- Seamless input switching with multi-image display on a single UHD monitor
- One Keyboard user controlling up to 4 PCs Offers 8 versatile display modes
- Seamless switching in single-screen mode; fast switching in multiview mode
- On-screen display (OSD) menu for advanced configuration
- Comprehensive EDID management for device compatibility
- Multiple control options:
  - Front panel buttons
  - IR remote
  - OSD menu
  - RS-232 commands
  - NetvioGo (as part of a JP4 Series AVoIP solution)
  - Crestron & Q-Sys Drivers
- Built-In USB3.1 Gen1 Hub for peripherals connection.
- Supports wired and wireless keyboard/mouse array
- Comes with 19" 1U adaptor brackets.

### Mechanical

- **Weights & Dimensions (each device)**
  - H:220mm | W:100mm | D: 44mm
  - 443g
- **Power Supply**
  - Input: AC100 - 240V 50/60Hz Output: 12V 2.5A (US/EU, CE/FCC/UL/C-TICK approvals)
- **Power Consumption**
  - 18.48W (max)
- **Operating Temperature**
  - 32 - 104°F / 0 - 40°C
- **Storage Temperature**
  - -4 - 140°F / -20 - 60°C
- **Relative Humidity**
  - 20 - 90% RH (no condensation)
- **Product Certifications**
  - CE, UKCA, FCC

# NETVIO

### What's in the box

- H2 MultiView Unit
- 1 IR Remote (CR2025 not included)
- 3Pin RS-232 Connectors (cable required)
- IR receiving cable.
- Wall mounted brackets
- 19" Rack mount kit
- USB to 3Pin RS-232 Cable
- 4x USB3.0 cables (PC to Multiview)
- 12V/2.5A Locking Power Supply

### MultiView & KVM Solution

Control up to four PCs on a single 4K UHD screen, seamlessly switching with hotkeys, IR remote, or third-party drivers. Ideal for conference rooms, control centers, and professional AV setups.

### Standalone or AVoIP

Use as a standalone 4x1 KVM switch or integrate with Netvio JP4 AVoIP for advanced MultiView layouts. Flexible control via NetvioGo, Crestron, Q-Sys, or RS-232 commands.

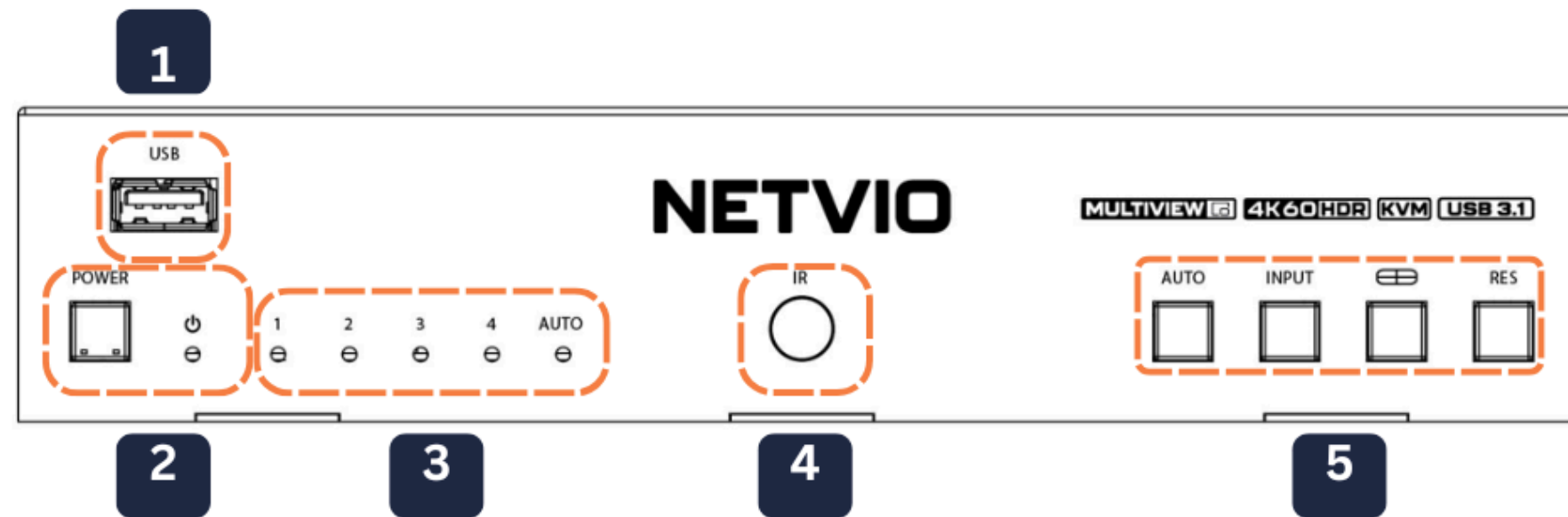
### Professional-Grade Video

Enjoy uncompressed 4K@60Hz (4:4:4), HDMI 2.0b, HDCP 2.2, and 18Gbps bandwidth with full multi-channel audio support. Perfect for mission-critical AV environments needing premium quality and reliability.

### Installer-Friendly

Quick to deploy with included wall brackets, rack kit, USB cables, IR extension, and power supply. Supports wired or wireless keyboards and mice for easy, flexible installations anywhere.

# FRONT PANEL



1 USB3.0 Device Input

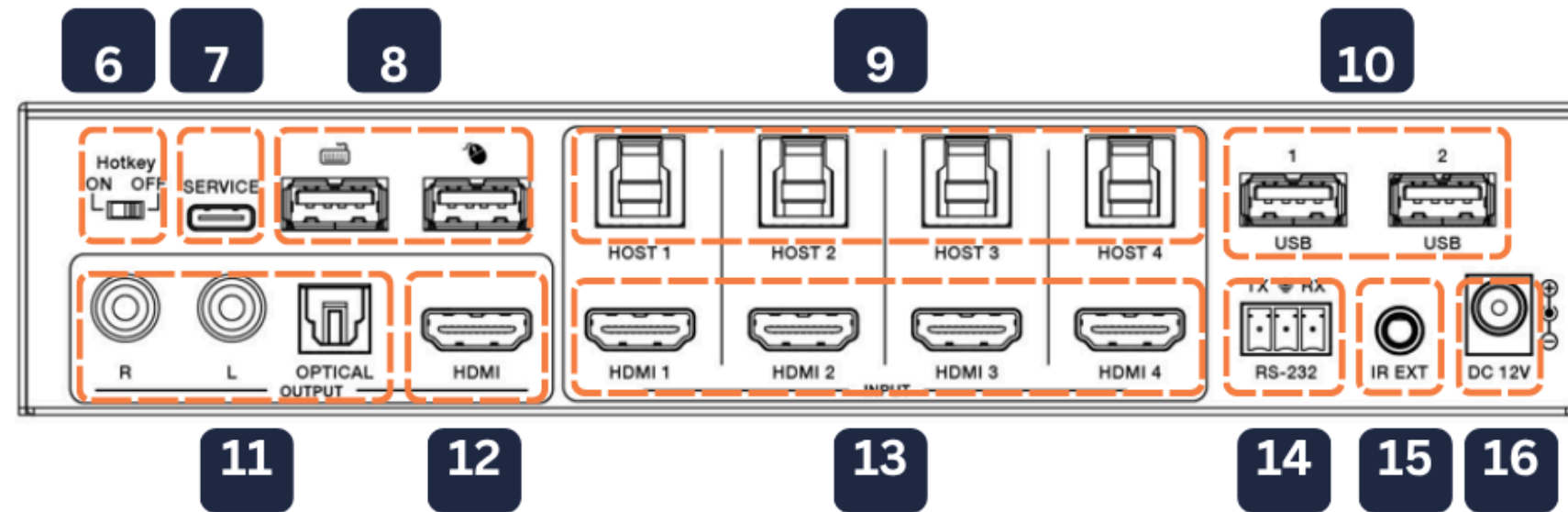
2 Power button & Status Light | RED Standby | GREEN On

3 Single Screen Output Status. Auto will select last input connected.

4 IR Receiving Window

5 **AUTO** | last Input Detect (Single Screen Mode Only)  
**INPUT** | Sequencing between inputs (Single Screen Mode Only)  
**MULTIVIEW** | Sequencing between different multi-view screen formats.  
**RESOLUTION** | SHORT PRESS: Displays current resolution: LONG PRESS: Changes resolution, for example 1280x782 60Hz

# REAR PANEL



**6** HOT KEY FUNCTION On/Off

**7** Service Upgrade

**8** USB2.0 Keyboard & Mouse Connection

**9** USB3.0 Host ports. Requires additional connection of corresponding HDMI

**10** USB3.1 Gen1 devices for memory, cameras, printers

**11** Analog & Digital outputs for Single screen & Input 1, when if multiview mode.

**12** HDMI Output (to display).

**13** HDMI Input upto 18Gb 4K60. Correspondence with host ports above.

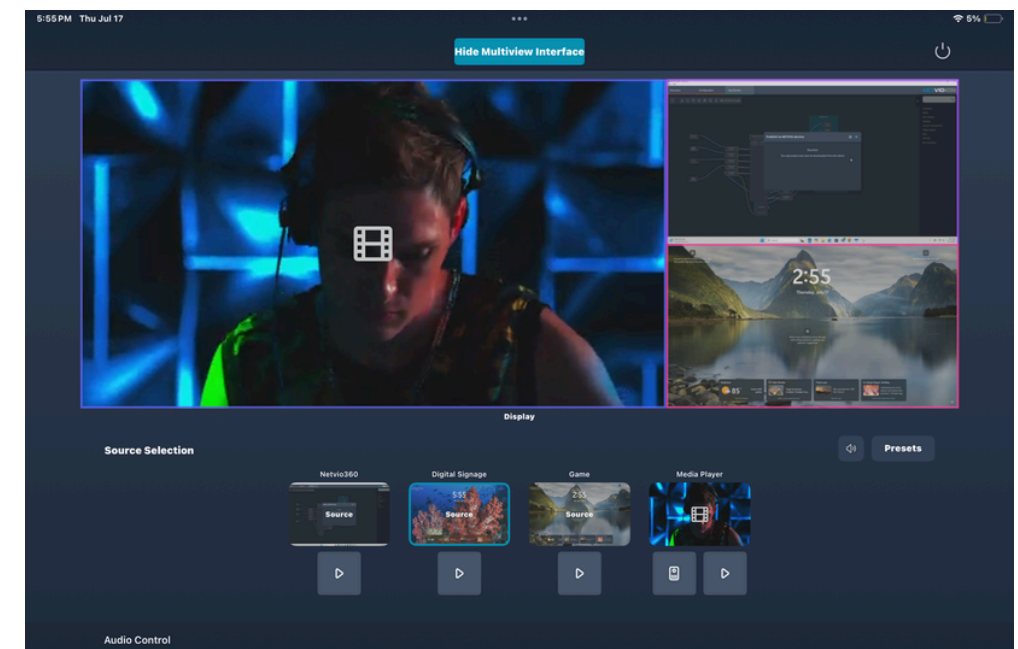
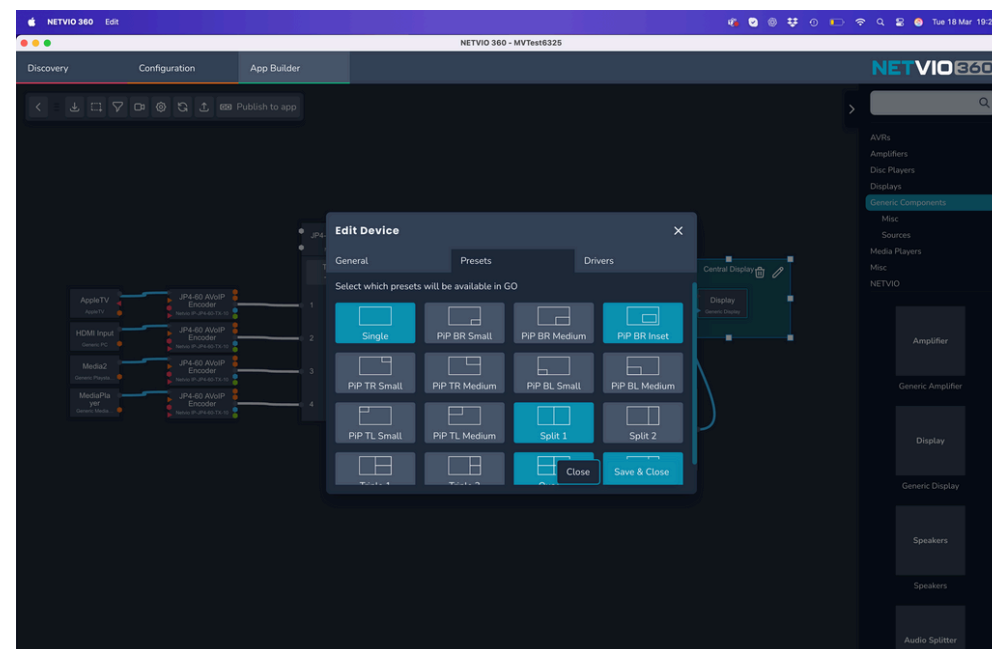
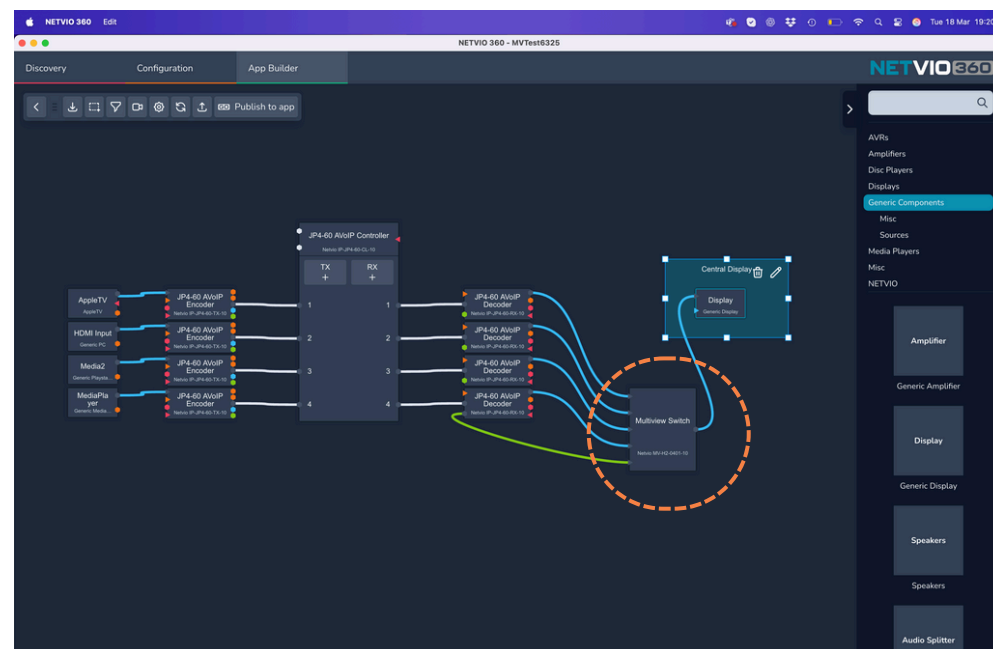
**14** RS-232 port, required for software control (provided) or 3<sup>rd</sup> party control.

**15** Connection for IR Extension cable (provided).

**16** Locking PSU connection (12V/2.5A)



# MULTIVIEW AVOIP



## APP BUILDER

Use Netvio's AppBuilder to add the MV-H2-0404-10 to your NetvioGo AVoIP user-interface.

Simply drag the device and connect the lines and Netvio will do the rest.

## CHOOSE PRESETS

Choose from a array of pre-set MultiView screen formats and make them available within the NetvioGo app user-interface.

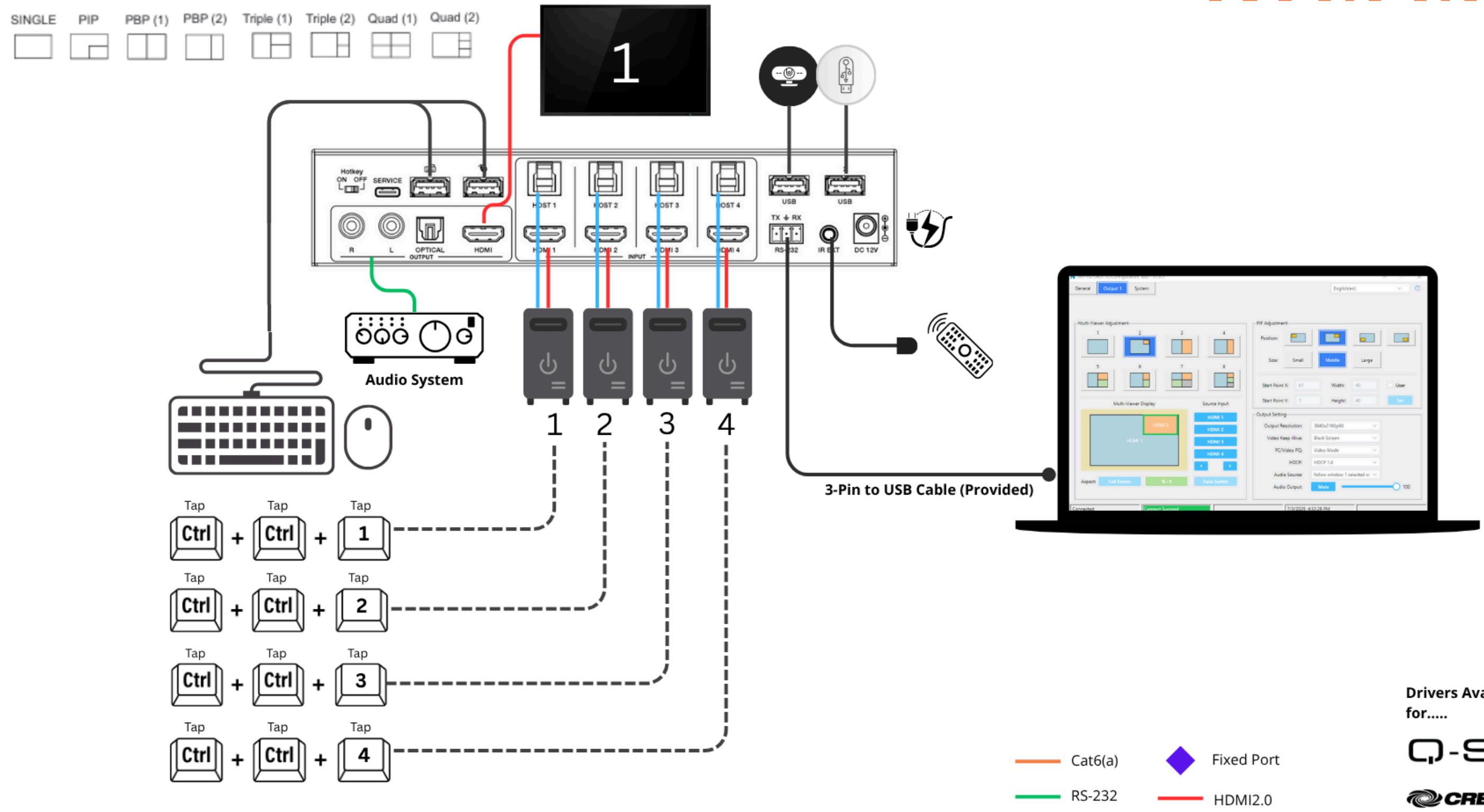
Users can quickly recall presets for fast switching and user control.

## NETVIO GO

Handover an intuitive and easy-to-use application compatible with Apple and Android devices.

Use stunning full motion previews to ensure the correct sources are assigned to any preset.

# KVM MODE

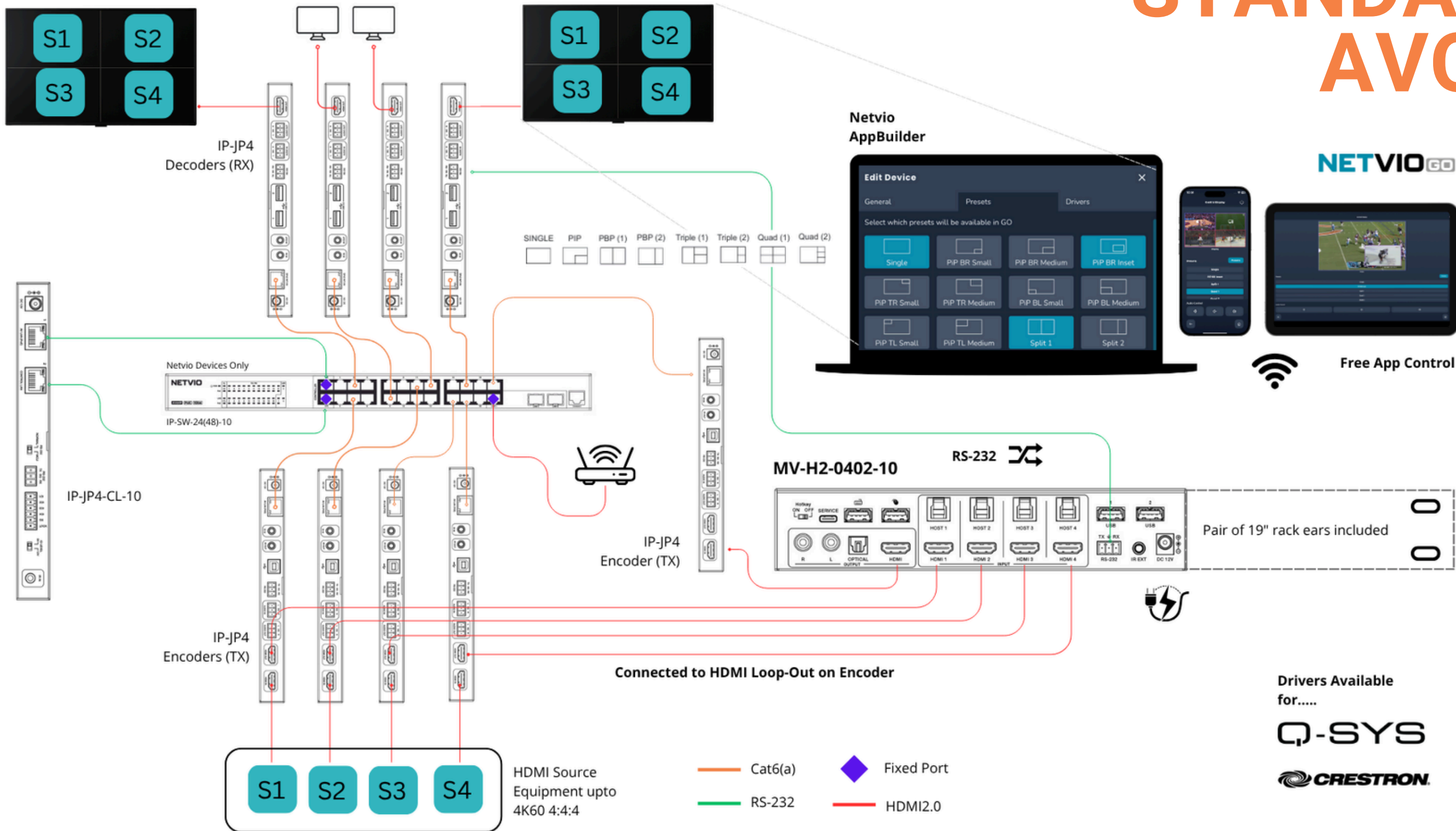


Drivers Available  
for.....

**Q-SYS**

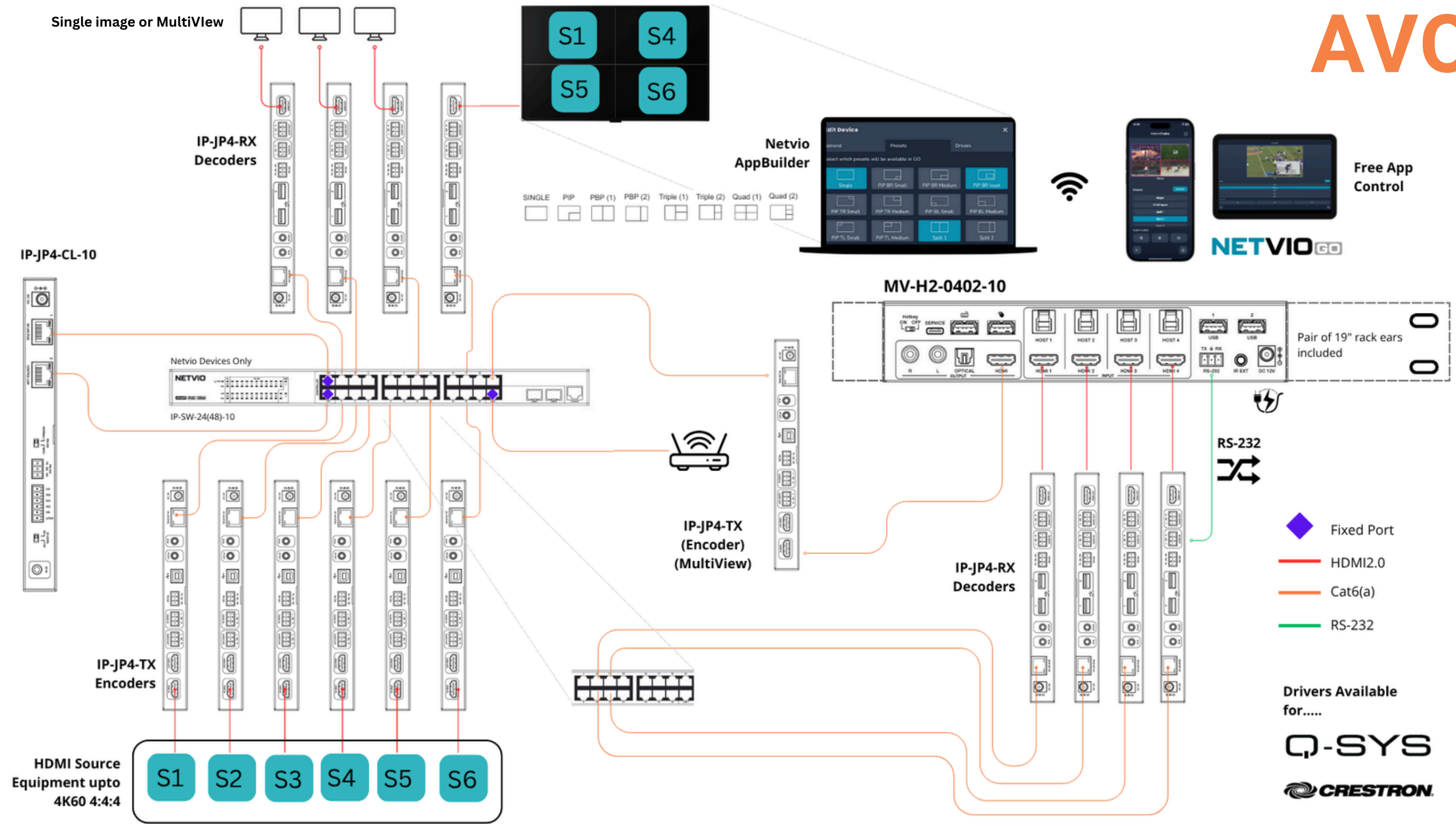
**CRESTRON**

# STANDARD AVOIP





# ADVANCED AVOIP



# ARCHITECTS

# ENGINEERS

# NETVIO

## MV-H2-0401-10

## 4K60 MultiView & KVM Switch with AVoIP Integration

### Seamless MultiView & KVM Control in One Powerful Device

The unit shall be a 4x1 MultiView processor and KVM switch capable of displaying up to four simultaneous 4K60 (4:4:4) sources on a single UHD display. It shall operate in standalone mode or integrate seamlessly with a Netvio JP4 AVoIP platform for networked source selection.

The device shall support HDMI 2.0b, HDCP 2.2/1.x, and provide an 18Gbps video bandwidth for uncompressed content. Supported resolutions shall include up to 3840×2160 @ 60Hz, with full multi-channel audio compatibility including LPCM, Dolby Digital, DTS, and DTS-HD Master Audio.

The unit shall provide eight MultiView layout modes, including full screen, Picture-in-Picture (PiP), Picture-by-Picture (PBP), 3-window, and Quad View. Seamless input switching shall be available in single-screen mode, while fast switching shall be available in MultiView mode.

Control options shall include front panel buttons, IR remote control, RS-232 commands, on-screen display (OSD), and hotkeys via a connected USB keyboard. When used with Netvio JP4 encoders/decoders, the device shall also be controllable via NetvioGo AppBuilder. Third-party control integration shall be supported via Crestron and Q-Sys drivers.

The unit shall include a built-in USB 3.1 Gen1 hub, supporting wired or wireless keyboards and mice, including models with a single USB receiver. Four USB 3.0 Type-B host ports shall provide keyboard/mouse control for each connected PC.

For professional installation, the device shall include 19" 1U rack-mount brackets, wall-mount brackets, IR extension receiver, and all required RS-232/USB cables. The power supply shall be a locking 12V DC, 2.5A adapter with universal AC 100–240V input and CE/FCC/UL approvals.

Environmental specifications shall include an operating temperature range of 0°C to 40°C (32°F to 104°F), storage temperature -20°C to 60°C (-4°F to 140°F), and 20–90% relative humidity, non-condensing. The unit shall have overall dimensions of 220mm (W) x 100mm (D) x 44mm (H) and a net weight not exceeding 443g.

The product shall be CE, UKCA, and FCC compliant, conforming to RoHS and WEEE environmental directives. It shall be covered by a standard 5-year manufacturer's warranty.

The product shall be the Netvio MV-H2-0401-10 or approved equal.