



Product Brochure

About Kordz



About us

Founded in Australia in 2003, Kordz is a globally recognised, multi-award-winning specialist cable brand distributed in over 40 countries .

Kordz partners with global technology leaders to engineer and manufacture professional grade connectivity products designed for systems technicians.

Kordz strives for 'Predictable Reliability', a core philosophy, constant pursuit and promised experience of its industry-leading range, which incorporates a high standard of practical and graceful design, using advanced manufacturing methods and premium materials.

Attentive to its distributors, integrators and installers, Kordz is renowned for the care it takes to meet the specific needs of professionals, innovating, supporting and educating the industry through knowledge and expertise.

Kordz - Connectivity.Assured



Timeline

2003

- Kordz founded in Mornington, Australia
- First HDMI Compliance Test Specification (CTS) released

2005

- Becomes an official HDMI Adopter company

2008

- Joins CEDIA
- Establishes first export partnership with Digital World in New Zealand
- Smarthouse - Winner for Best Cables Range - Master Series

2009

- Invited by HDMI Licensing to exhibit at CES as a technology partner

2010

- Smarthouse - Winner for Best HDMI Cables - EVX Series
- Established Kordz International in Hong Kong

2011

- CEDIA Finalist - Best New Product - HDBaseT™ Extender
- Smarthouse - Winner for Best HDMI Cables - EVX Series

2012

- Wins CEDIA's product innovation of the year award
- Connected's Most Popular Award - HDMI Cabling

2013

- Connected Home Most Popular Award - HDMI Cabling
- CEDIA Award - Best New Product - NEO S3

2014

- Connected Home Most Popular Award - HDMI Cabling

2015

- Kordz multiplies creating: Kordz Australia & Kordz International
- Kordz Exhibits at ISE and enters the European market
- Established Kordz Europe Ltd in UK
- Connected's Most Popular Award - HDMI Cabling

2016

- 1st European distributors appointed
- Future Ready Solutions appointed US Master Distributor
- Connected's Most Popular Award - HDMI Cabling

2017

- Kordz Partners with DPL Labs
- Hybrid Fibre (AOC) HDMI cable launched
- Connected's Most Popular Award - HDMI Cabling

2018

- Joins AVIXA
- Exporting to over 29 different countries around the world
- Connected Home Most Popular Award - HDMI Cabling

2019

- Connected Home Most Popular Award - HDMI Cabling
- PRO series Cat6 patch cords released

2020

- Individually tested PRS series Cat6a patch cords released
- Connected Home Most Popular Award - HDMI Cabling

2021

- Ultra High Speed BRAVO HDMI cables released
- Connected Home Most Popular Award - HDMI Cabling
- 1st patent granted for PRO and PRS patch cables

2022

- Connected Home Most Popular Award - HDMI Cabling
- Connected Home Most Popular Award - Speaker Cables

2023

- PRO SlimCat Network Cable System released
- TNT (Top New Technology) Award – SlimCat Network Cable System
- Best Of Show Award – SlimCat Network Cable System

Contents

About Kordz

About Kordz	2
Timeline	3

HDMI Cables

ONE Passive HDMI Cable	6
ONEv2 18Gbps Passive HDMI Cable	7
PRO ³ 18Gbps Passive HDMI Cable	8
PRO ³ 18Gbps Active Copper HDMI Cable	9
R.3 18Gbps Passive HDMI Cable	10
PRO ⁴ 48Gbps Passive HDMI Cable	11
PRO ⁴ 48Gbps Active Optical HDMI Cable	12
PRS ⁴ 48Gbps Passive HDMI Cable	13
Bravo 8K Performance	14
PRO HDMI 5V Power Injector	15

DisplayPort™ Cables

PRO 8K DisplayPort Cable	16
--------------------------------	----

TOSLink Cables

PRO ³ TOSLink	17
--------------------------------	----

USB Cables

PRO 20Gbps Passive USB-C	18
PRO 10Gbps AOC USB-C	19

RCA Cables

PRO ³ Single RCA	20
PRO ³ Twin RCA	21

Patch Cords

PRO Cat6 Patch Cords	22
PRO BeltPak Packaging	23
PRS Cat6A Patch Cords	24 - 25

SlimCat™ Network Cabling System

PRO SlimCat Cat6 Cable	26
PRS SlimCat Cat6A Cable	27
PRO SlimCat Cat6 Outdoor Cable	28
PRO SlimCat Cat6 Connector & Strain Relief	29
PRS SlimCat Cat6A Connector	30
PRO SlimCat Cat6 Toolless Keystone	31
PRS SlimCat Cat6A Toolless Keystone	32

Contents

Bulk Network Cable

ONE Cat6 Cable	33
ONE Cat6A Cable	34
ONE Cat6 Direct Burial Cable	35
ONE Cat6 Outdoor Cable	36

Network Cable Components

ONE RJ45 Crimp Tool	37
ONE Cat6 Connector & Strain Relief	38
PRO Cat6 Connector & Strain Relief	39
PRS Cat6A Toolless Plug	40
PRO Cat6 Toolless Keystone	41
PRS Cat6A Toolless Keystone	42
PRO Keystone Bezel/Adapter	43
PRO Modular Keystone Patch Panel	44

Accessories

PRO Hook & Loop	45
-----------------------	----

Control Cables

ONE KNX Control Cable	46
-----------------------------	----

Balanced Audio

ONE Balanced Audio Cable	47
ONE XLR Connectors	48

Speaker Cables

ONE Speaker Cable	49
ONE Outdoor Speaker Cable	50

Banana Plugs

ONE Banana Plugs	51-52
------------------------	-------

HDMI Extenders

PLX HDB.3	53
-----------------	----

Reference Guides

Technology Guides	54 - 57
Kordz Global Offices	58

Tech Icon Glossary

Tech Icon Glossary	59 - 65
--------------------------	---------

HDMI Cables

ONE



Bulk Packaged HDMI Cables

The Kordz **ONE** HDMI is flexible, compact and certified for your HDMI plug and play requirements. Each cable is individually tested as part of our strict production process, giving us the confidence to offer you our Lifetime Guarantee.

- Engineered and constructed to ensure installation success and ease
- High Speed with Ethernet in lengths to 3m (9'10") for 2160p (4K) support
- Standard with Ethernet with operational support to 1080p/60 up to 10m (32'9")
- Induction soldered pin transitions for benchmark inter-terminal uniformity
- PVC boot shell assembly with folded nickel plated HDMI connector
- 100% of units tested on the production line for electrically continuity on all pins, with 1080p/60 application test
- Kordz Lifetime Warranty



HDMI Cables

ONE



ONEv2 18Gbps Passive HDMI Cable

The Kordz **ONEv2** HDMI Cable is the professional grade passive HDMI cable designed to provide reliable, economical, uncompressed 4K connectivity for high volume commercial integration projects. It delivers full 18Gbps performance at every length up to 5m. Its slim, flexible, fire-rated PVC jacket and compact connector ensure durability, easy routing and secure connections, even in tight spaces. Supplied in eco-friendly recyclable paper packaging, the ONEv2 HDMI Cable is quick to open, easy to clean up, and comes backed by the Kordz lifetime warranty for peace of mind.

- Full 18Gbps bandwidth for reliable uncompressed 4K signal at all lengths up to 5m
- Compact connector assembly rated for 1kg retention force
- Flexible, slim, fire-rated PVC jacket for easy installation in tight spaces
- Supplied in eco-friendly recyclable, quick-to-open paper packaging with hang tab
- Individually tested for consistent performance that's 'Connectivity Assured'
- Designed for economical, high-volume commercial integration projects
- Lifetime warranty for peace of mind



HDMI Cables

PRO³



18Gbps 4K Passive HDMI Cables

The Kordz **PRO³** Passive HDMI Cables exceed the standards of performance and flexibility to deliver 18Gbps 4K resolution. Fully shielded high quality ABS shells and with 1Kg connectors provide resilience in demanding applications where a cost-effective, reliable solution is required. Fit Kordz PRO³ Passive HDMI Cables with confidence, backed by the Kordz Lifetime Guarantee.

- A solid 1Kg grip, ensuring connectors stay in place for as long as required
- A compact 18mm wide ABS head shell for easy installation
- Reinforced internals for superior flexibility and pull strength during installation
- A lightweight and UL CMG fire rated jacket for safety
- High contrast, detailed packaging & labels with inventory management design
- Kordz Lifetime Warranty



HDMI Cables

PRO³



18Gbps 4K Active Copper HDMI Cables

The Kordz **PRO³** Active Copper HDMI Cables exceed the standards of performance and flexibility, delivering 18Gbps 4K resolution over long distances and optimised through Active Copper Technology. Fully shielded, high quality ABS shells with a 1Kg connector, provide resilience in demanding applications where a cost- effective, long length, reliable solution is required. Fit Kordz PRO³ Active Copper HDMI Cables with confidence, backed by the Kordz warranty.

- A solid 1Kg grip, ensuring connectors stay in place for as long as required
- A compact 18mm wide ABS head shell for easy installation
- Reinforced internals for superior flexibility and pull strength during installation
- A lightweight and UL CMG fire rated jacket for safety
- No external power dependencies, it works like a normal passive HDMI cable
- 18Gbps certification from DPL Labs
- High contrast, detailed packaging & labels with inventory management design
- Kordz 2 Year Warranty



HDMI Cables

R.3

0.3m	0.6m	0.9m	1.2m	1.5m	1.8m	2.1m
2.4m	2.7m	3.0m	3.6m	4.2m	4.8m	5.4m

18Gbps 4K Rack Optimised HDMI Cables

The Kordz **R.3** HDMI cable is designed for critical AV applications. Increased conductor shielding, 2kg retention connectors and flexible lengths make the R.3 HDMI cable perfect for 19" rack installations. This unique combination of advanced features delivers unrivalled installation performance and reliability. Available in lengths from 0.3m to 5.4m.

- Engineered and built to deliver maximum commercial up-time
- 0.3 - 3.0m lengths in 0.3m increments for precision rack fit
- 3.6 - 5.4m lengths in 0.6m increments
- High bandwidth solid OFC conductors
- Induction soldered pin transitions for benchmark inter-terminal uniformity
- Anti-fatigue Die-cast Zinc alloy connectors tested to $\geq 1,000$ cycles & 2kg retention force
- 100% of units tested for zero Bit Error Rate (BER) @ 340Mscs, <0.05% in-field failure rate
- Halogen-free construction
- 18Gbps certification from DPL Labs
- Kordz Lifetime Warranty



HDMI Cables

PRS⁴



48Gbps 8K Passive HDMI Cables

The Kordz **PRS⁴** Passive HDMI Cables are designed to meet the high demands and rigour of professional integration. The Kordz PRS⁴ range features cables that are compact, tough and flexible with a 2Kg retention force die-cast connector. Kordz PRS⁴ HDMI Passive Cables support the full features and benefits of the latest HDMI technology when using 4K HFR or 8K devices.

- Ultra High Speed certified
- 48Gbps support for 8K/10K, HDR, VRR, HFR, 3D, FRL
- Robust engineering and construction with premium materials
- 15µ" gold-plated solid copper pins
- Compact connector with full internal zinc-alloy die-cast housing
- Easy installation aided by the unique Kordz shark-nose dust-cap
- Convenient easy tear bulk packaging minimising waste on site
- UL CMG rating
- High contrast, detailed packaging & labels with inventory management design
- Kordz Lifetime Warranty



HDMI Cables

PRO⁴



48Gbps Passive HDMI Cables

The Kordz **PRO⁴** Passive HDMI Cable is the professional grade solution for uncompressed 8K/10K HDMI signal transmission, supporting full 48Gbps bandwidth and eARC compatibility for flawless audio-visual performance in short to medium length installations up to 9m. Its lightweight ABS connector assembly features a secure 1kg retention force, ensuring stable connections, while the flexible, fire-rated cable is designed for easy, hassle-free installation. Each cable undergoes individual production testing for 'Connectivity Assured' performance. Built for durability and backed by a lifetime warranty.

- All lengths support resolutions requiring 48Gbps transfer rates, including 8K60 or 10K60 HDR
- Lightweight ABS connector assembly with 1kg retention force
- UL CMG fire-rated cable (3m and above) for safe in-wall installations
- Flexible design ideal for professional AV setups
- Individually tested for consistent performance that's 'Connectivity Assured'
- Gold-plated connectors for optimal signal integrity and longevity
- Lifetime warranty for peace of mind



HDMI Cables

PRO⁴

7.5m	10m	12.5m	15m	20m
25m	30m	75m	50m	100m

48Gbps Active Optical HDMI Cables

The Kordz **PRO⁴** Active Optical HDMI Cable is the professional grade solution for uncompressed 8K/10K HDMI connectivity over ultra long distances. Supporting full 48Gbps data rates, it delivers seamless performance from 7.5m up to 100m, with minimal latency and no external power required. Its lightweight ABS connector assembly with gold-plated HDMI connector ensure secure, reliable connections, while the robust 4.7mm cable diameter and 20kg pull-force rating provide exceptional durability. Individually tested and DPL Labs certified for true 48Gbps performance.

- Supports uncompressed 48Gbps for 8K/10K video transmission up to 100m
- No external power required for ease of installation
- Lightweight ABS connector assembly with 1kg retention force
- Inner metallic shell for component protection and EMI shielding
- 4.7mm cable diameter with 20kg pull rating for durability
- Individually tested and DPL Labs certified for guaranteed performance
- Fire-rated to UL CMG standards for fire safety
- Backed by a 2-year warranty
- Eco-friendly packaging



HDMI Cables

Bravo

1.0m

1.5m

2.0m

3.0m

48Gbps 8K Passive HDMI Cables

The Kordz **Bravo** HDMI cables are the latest release to meet the new HDMI specification standard. Kordz Bravo HDMI cables have a compact design, flexibility and provide the performance needed to support the video standards of 4K/120fps UHD, 5K Wide, 8K & 10K Wide. Bravo will also support up to 32 channels of audio including Dolby Atmos, Auro3D and DTS:X immerse audio formats.

- Flexible
- Compact design
- Supports immersive audio up to 32 channels
- Newly designed anodized head shell
- Die-cast gold plated connector and contacts with a 2kg retention force
- 100% of units tested on the production line for electrical continuity on all pins, with full Bit Error Rate (BER) application test
- Kordz Lifetime Warranty



48
Gbps

10K
UHD WIDE

8K
ULTRA HD

DYNAMIC
HDR

eARC

VRR

HFR

ALLM

QFT

QMS

2KG
RETENTION

UL
CMG
FIRE RATED

LIFETIME
WARRANTY

HDMI Cables

PRO

HDMI 5V Power Injector

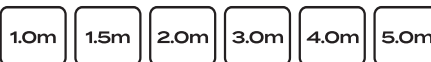
The Kordz **PRO** HDMI 5V Power Injector is the easy and reliable way to fix power issues in professional HDMI installations. By injecting stable 5V power directly into the HDMI signal path, ensuring Active HDMI cables and connected devices operate reliably, even when source devices fail to provide sufficient power. Designed with an ultra-compact form factor, integrated power pigtail, and USB-A power plug, it's perfect for tight installation spaces. With 48Gbps passthrough and a lightweight design, this power injector is the must-have solution for professional integrators seeking faultless HDMI performance.

- Injects stable 5V power into the HDMI 5V pin for reliable Active HDMI cable operation
- Supports 48Gbps passthrough for uncompressed 8K/10K video
- Ultra-compact design for easy installation in high-density setups
- USB-A power plug for flexible power sourcing
- Thin and flexible 0.5m cable ideal for installation
- Lightweight construction prevents added strain on HDMI sockets
- Individually tested for consistent quality and performance
- Kordz Lifetime Warranty



DisplayPort™ Cables

PRO



32.4Gbps 8K DisplayPort™ Cables

The Kordz **PRO** Series DisplayPort™ cable is engineered for installation success, longevity, backwards compatibility and high transmission for professional displays. Featuring a combination of a slim profile, solid copper pins and a highly flexible fire rated jacket the PRO Series DisplayPort™ cable reliably delivers up to 8K resolutions from compatible sources to displays. Available in lengths from 1m to 5m.

- Engineered and constructed to ensure installation success and longevity
- DisplayPort™ 1.4 offers backwards compatibility with earlier DisplayPort™ standards
- Supports high resolution displays up to 8K 7680 x 4320@60Hz DSC1.2
- Supports High Bit Rate 3 (HBR3) mode with data rate up to 32.4Gbps
- Supports Display Stream Compression (DSC) 1.2
- Forward Error Correction (FEC)
- Supports Expanded Audio Transport - up to 32 audio channels
- 1536kHz audio sample rate, and inclusion of all standard audio formats
- Kordz Lifetime Warranty



D DisplayPort™

D8K

TOSLink Cables

PRO³

0.5m	1.0m	1.5m	2.0m	3.0m	4.0m
5.0m	7.5m	10m	12.5m	15m	20m

TOSLINK Cable

Kordz **PRO³** Series TOSLINK Cable delivers a clean, accurate digital audio signal for professional AV installations. The robust, yet flexible jacket fits in tight spaces, whilst the secure SureFit connector is designed for easy installation. The PMMA acrylic polymer fibre conductor offers optimised digital audio transmission, supporting a wide range of audio formats. Available in lengths from 0.5m to 20m making them ideal for a wide range of applications, the Kordz PRO³ Series TOSLINK Cable makes installations easier for the professional installer.

- Shallow mounting depth & ergonomic connector design
- 1mm diameter PMMA Acrylic core for optimal light transmission
- 4.8mm cable diameter to be rugged yet flexible
- Metal optical tip designed for robustness
- Secure SureFit connector
- Flexible and durable matte black PVC jacket
- UL444 CMG fire-rated
- Kordz Lifetime Warranty



USB Cables

PRO



20Gbps USB4 Gen2 Passive USB-C Cable

The professional grade Kordz **PRO** Passive USB-C Cable delivers full-featured, certified USB4 Gen2 performance with data transfer speeds up to 20Gbps, 4K60 video support, and up to 240W Power Delivery on lengths up to 2m and 60W beyond. Its compact connector design and lightweight polycarbonate construction reduce strain on ports, ensuring reliable installation in tight spaces. Available in lengths from 0.5m to 3m, this cable is engineered specifically for integrators seeking a durable, high performance USB-C solution with certified functionality for demanding AV and power applications.

- Certified USB4 Gen2 full-featured performance with 20Gbps transfer speeds and 4K60 support
- Certified PD3.1 EPR 240W power delivery on lengths up to 2m and PD3.1 SPR 60W on 3m
- Compact polycarbonate connector shell reduces strain on device ports
- Internal metal shell for EMI protection and connector durability
- Available in lengths from 0.5m to 3m, suitable for a variety of use cases
- Lightweight and flexible design for easy installation in tight spaces
- VW-1 fire-rated cable for safety and peace of mind
- Backed by a 2 year warranty for assured reliability



USB Cables

PRO



10Gbps USB3.2 Gen2 Active Optical USB-C Cable

The Kordz **PRO** Active Optical USB-C Cable is the professional grade solution for reliable, hassle-free USB connectivity for distances up to 10 metres. Engineered to support full-featured USB 3.2 Gen2 functionality offering 10Gbps data transfer, supports 4K60 video, and up to 60W power delivery. Its polycarbonate 'snouted' connector ensures compatibility with recessed or tight USB-C ports, while the lightweight construction minimises strain on device sockets. Available in lengths from 5m to 10m, it is the purpose-built solution for professional integrators requiring dependable long distance USB-C performance for complex AV and power applications.

- Full-featured USB 3.2 Gen2 performance with 10Gbps data transfer and 4K60 video support
- 60W Power Delivery for powering devices over long distances
- Lightweight polycarbonate snouted connector design for easy installation and minimal port strain
- Internal metal shell for EMI protection and enhanced connector strength
- Available in lengths of 5m, 7.5m, and 10m for extended connectivity
- UL CMG fire-rated cable for safety in commercial and residential installations
- Individually tested for consistent quality and reliability
- Backed by a 2 Year Warranty for peace of mind



RCA Cables

PRO³

0.5m	1.0m	1.5m	2.0m	3.0m	4.0m
5.0m	7.5m	10m	12.5m	15m	20m

Single RCA Cable

Kordz **PRO³** Series RCA Cables are highly flexible, solid, and engineered for versatility in professional AV installations. They are designed for easy installation with shallow mounting depth and a secure connector. The double-shielded matte black CMG fire-rated jacket and stranded oxygen free copper conductors minimise signal loss and mitigates interference. The Single RCA cables are optimised for S/PDIF digital audio featuring 75Ω cables and are available in lengths from 0.5m to 15m, making them idea for digital audio interconnects or for hooking up subwoofers.

- Digital Audio Optimised 75Ω coaxial cable (PRO3-1RCA)
- Easy channel identification with full coloured connector bodies
- Shallow mounting depth & ergonomic connector design
- Stranded oxygen-free copper conductor
- Dual shielded cable with foil and braid
- Flexible and durable matte black PVC jacket
- UL444 CMG fire-rated
- Kordz Lifetime Warranty



RCA Cables

PRO³



Twin RCA Cable

Kordz **PRO³** Series RCA Cables are highly flexible, solid, and engineered for versatility in professional AV installations. They are designed for easy installation with shallow mounting depth and a secure audio connector. The double-shielded matte black CMG fire-rated jacket and stranded oxygen free copper conductors minimise signal loss and mitigates interference. The twin RCA cable variants are optimised for analogue audio use with 55Ω cable construction and are available in lengths from 0.5m to 5m. Kordz PRO3 Series RCA Cables make installations easier whilst ensuring reliable connectivity.

- Digital Audio Optimised 55Ω coaxial cable (PRO3-2RCA)
- Easy channel identification with full coloured connector bodies
- Shallow mounting depth & ergonomic connector design
- Stranded oxygen-free copper conductor
- Dual shielded cable with foil and braid
- Flexible and durable matte black PVC jacket
- UL444 CMG fire-rated
- Kordz Lifetime Warranty



Patch Cords

PRO SlimCat

0.15m	0.25m	0.5m	0.75m	1.0m	1.5m	2.0m	2.5m
3.0m	4.0m	5.0m	7.5m	10m	15m	20m	30m

Cat6 28AWG Slim Profile Patch Cords

The Kordz **PRO** Cat6 Network Patch Cord is a highly flexible, slim-profile, stranded 28AWG copper patch cord ideal for professional network installations. Available in lengths from 0.15m to 30m the PRO patch cord features our custom designed compact RJ45 connector providing an almost unbreakable locking latch.

- U/UTP 28AWG Cat6 slim profile 3.9mmØ diameter
- Engineered and constructed to ensure installation success and longevity
- Suitable for 1000BASE-T/1000BASE-TX (Gigabit) & 10GBASE-T, PoE, PoE+ & PoE++
- Exceeds all Category 6 ANSI/TIA 568.2-D standards for all frequencies from 1 to 250 MHz
- UL (CM) fire rating
- 568B wire connection configuration
- Patented compact connector design with 2000 bend cycle lock tab
- Available in 8 Colours – Black, Blue, Green, Grey, Purple, Red, White & Yellow
- Available in lengths from 0.15m to 30.0m lengths
- Kordz Lifetime Warranty



Colours Available:



Patch Cords

BeltPak™




BeltPak Packaging - PRO Series Cat6 Patch Cords

Kordz' **PRO** Cat6 Network Patch Cords, now bulk packaged in Kordz' installation-friendly and 100% recyclable, BeltPak Bulk Packaging Solution.

Vastly improving upon traditional single-use packaging, Kordz' BeltPak packaging comprises of 100% recyclable paper material, in a compact "belt" of 10 perforated tear-off packs. Making it easy to count, carry, handle and open cables on the job for faster, more efficient installations, by slinging a belt over your shoulders leaving your hands free to manage other important installation tasks whilst also producing minimal waste for quick, eco-friendly disposal.

- Bulk Packaging: 100% recyclable & ECO friendly
- Sold as full Master Cartons – multiple belts per box
- BeltPak™ Bulk Packaged Patch Cords Available in 2 colours – Black & Blue
- Available lengths – 0.15m, 0.25m, 0.5m, 1.0m, 1.5m, and 2.0m
- Kordz Lifetime Warranty



Colours Available:  

Patch Cords

PRS SlimCat

0.15m	0.25m	0.5m	0.75m	1.0m	1.5m	2.0m	2.5m
3.0m	4.0m	5.0m	7.5m	10m	15m	20m	30m

Cat6A U/FTP 28AWG Slim Profile Patch Cords

The Kordz **PRS** Cat6A Network Patch Cord is a 10Gbps, slim-profile, 28AWG Copper patch cord designed for high-bandwidth network installations. Available in lengths from 0.15m to 30m the PRS patch cord features our custom designed compact RJ45 connector providing an almost unbreakable latching tab.

- Exceeds all Category 6A ANSI/TIA 568.2-D standards for all frequencies from 1 to 550 MHz
- 28AWG stranded U/FTP Cat6A shielded slim-profile 4.8mmØ diameter
- Each cable is individually performance tested with its own unique downloadable test report
- Patented compact connector design with 2000 bend cycle lock tab
- Suitable for 1000BASE-T/1000BASE-TX (Gigabit) & 10GBASE-T, PoE, PoE+ & PoE++
- UL (CM) fire rating
- 568B wire connection configuration
- World's smallest minimal operational depth and most flexible Cat6A U/FTP patch cord
- Available in 8 Colours – Black, Blue, Green, Grey, Purple, Red, White & Yellow
- Kordz Lifetime Warranty



Colours Available:

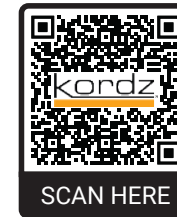


Patch Cords

Kordz PRS Cat6A Patch Cord Test Reports

We are proud to offer further assurances for the Kordz PRS-PC Cat6A patch cords, by providing a unique test report for every PRS-PC cable we manufacture; component tests up to 10m and channel tests above 10m are available to download by using the cable's unique Test ID.

The reports offer insight into the performance characteristics of individual cables and provide time-saving, reliable documentation that is often required in today's projects.



Try it for yourself:

Scan the QR code and use the below Test ID to view and/or download the factory test report.

Test ID: 9430-b553-a3b1



Locate your Test ID:

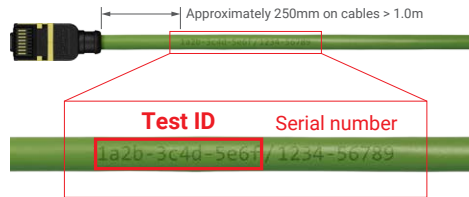
1. On the packaging



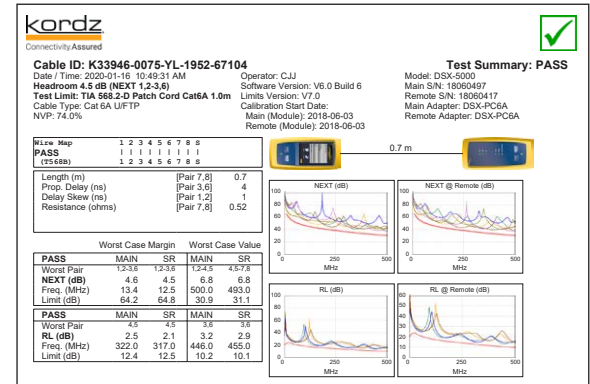
Download this cable's test report from <https://assured.kordz.com/cable>
Serial number: 1234-56789
Test ID: 1a2b-3c4d-5e6f

Test ID

2. On the cable jacket



Sample Report:



SlimCat™ Network Cabling System

PRO SlimCat

Cat6 28AWG U/UTP Bulk Network Cable

Part of the multi-award-winning Kordz **PRO SlimCat™** Network Cable System, the PRO SlimCat Network Cable is the industry-leading, highly flexible network cable designed for high density installations. The slim 4.0mm diameter Cat6 U/UTP cable reduces bulk and makes installation easier, whilst delivering IEEE802.3bt PoE++ at 100W and 1Gbps network connectivity up to 50 metres. Pair it with Kordz PRO SlimCat RJ45 Crimp Connectors and RJ45 Keystone Sockets, for a complete Kordz ecosystem that delivers 'Connectivity Assured'.

- Delivers ANSI/TIA-568.2-D Cat6 permanent link performance up to 50m
- Ultra slim 28AWG 4mm diameter reduces bulk and makes installation smoother and easier.
- Reducing bundle sizes by almost half (cross-sectional area)
- IEEE802.3bt 100W PoE++ capable
- Simultaneous UL444 CM and CPR Dca fire rating
- Supplied in the durable Kordz Rapid-EZ-Reel Packaging - 305m, Metre Marked
- Kordz Lifetime Warranty



Colours Available:



SlimCat™ Network Cabling System

PRS SlimCat



Cat6A 28AWG F/UTP Bulk Network Cable

Kordz **PRS SlimCat™** Cat6A Network Cable is the industry-leading highly flexible shielded network cable designed for high performance and high-density installations that delivers all the power in half the size and goes where other Cat6A cables can't. The slim 5mm diameter Cat6A F/UTP cable reduces bulk and makes installation easier whilst delivering IEEE802.3bt PoE++ at 100W and 10Gbps network connectivity up to 50 metres. Complete the Kordz PRS SlimCat system by pairing the cable with Kordz PRS SlimCat RJ45 Shielded Crimp Connectors and Cat6A RJ45 Keystone Sockets to ensure reliable, compact connectivity.

- Delivers ANSI/TIA-568.2-D Cat6A permanent link performance up to 50m
- Ultra slim 28AWG 5mm diameter reduces bulk and makes installation smoother and easier.
- Reducing bundle sizes by almost half (cross-sectional area)
- IEEE802.3bt 100W PoE++ capable
- Simultaneous UL444 CM and CPR Dca fire rating
- Supplied in the durable Kordz Rapid-EZ-Reel Packaging - 305m, Metre Marked
- Kordz Lifetime Warranty



Colours Available:



SlimCat™ Network Cabling System

PRO SlimCat

305m

Outdoor Cat6 Network Cable

Delivering all the power and performance of Cat6 outdoor cable in half the size, the Kordz **PRO SlimCat™** Outdoor Cat6 Network Cable revolutionises outdoor connectivity and goes where other cables can't. The slim, flexible, yet robust design supports PoE++ for high performance power and data transmission, making it perfect for tight pathways and discreet installations. Ideal for IP cameras, Wi-Fi access points and smart doorbells, it features a black PE UV-stabilised jacket engineered to withstand harsh external conditions and complies with EU, UK and Australian standards. It works seamlessly with existing PRO SlimCat system components and comes backed by Kordz' 5 Year Warranty.

- UV-stabilised PE jacket compliant with EU, UK and AU standards for outdoor use
- Fully compatible with existing PRO SlimCat system components
- Reduced bundle sizes that are half the cross-sectional area of 23/24 AWG network cable bundles
- Performs to industry standards and is fully featured including PoE++ up to 50m
- Conveniently packaged on a 305m drum
- Slim, flexible design enabling discreet installations and dense cable pathways
- Engineered to meet the demands of modern outdoor PoE applications
- Kordz quality with 5 Year Warranty.



SlimCat™ Network Cabling System

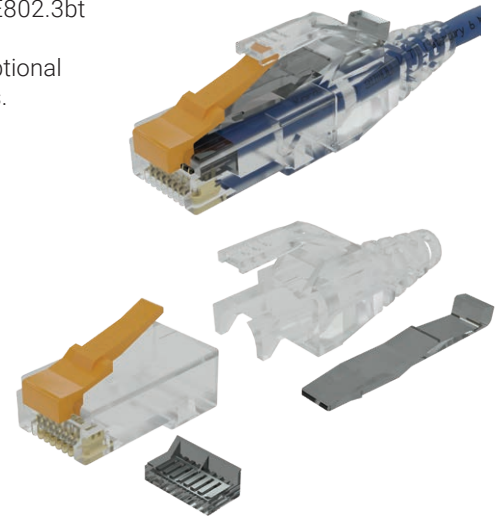
PRO SlimCat



Cat6 RJ45 Crimp Connector & Strain Relief

The Kordz **PRO** SlimCat™ Cat6 Crimp Connector & Strain Relief are designed specifically for use with the Kordz PRO Series SlimCat Cat6 Network Cable. The connector is rated for IEEE802.3bt PoE++ at 100W and features an innovative composite construction that incorporates a transparent body with a durable snap-proof nylon latch. The Strain Relief features an optional locking pin to prevent accidental disconnects when installed in mission critical systems.

- 100 units per box (Connector & strain relief sold separately)
- Enables delivery of ANSI/TIA-568.2-D Cat6 performance
- Durable snap-proof nylon latch
- Tinted wire manager for handling ease and insertion verification
- Optional strain relief available featuring a removable locking pin
- IEEE802.3bt 100W PoE++ capable
- UL94 V-0 fire-rated
- Kordz Lifetime Warranty



SlimCat™ Network Cabling System

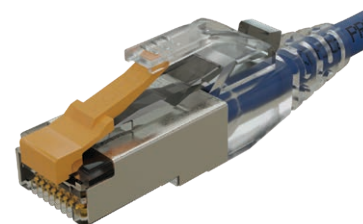
PRS SlimCat



Shielded Cat6A RJ45 Crimp Connector

The Kordz **PRS SlimCat™** Shielded RJ45 Crimp Connector is designed specifically for use with the Kordz PRS SlimCat Cat6A Network Cable and is also compatible with the PRO SlimCat Strain Relief. Featuring an innovative composite construction that incorporates a shielded transparent body, nickel plated metal shielding and a durable 'snap-proof' nylon latch. This connector is rated for IEEE802.3bt PoE++ at 100W and 10Gbps network connectivity.

- 100 units per box
- Enables delivery of ANSI/TIA-568.2-D Cat6A performance
- Durable snap-proof nylon latch
- Nickel-plated metal shielding
- Tinted wire-manager for handling ease and insertion verification
- Optional PRO strain relief available featuring a removable locking pin
- IEEE802.3bt 100W PoE++ capable
- UL94 V-0 fire-rated
- Kordz Lifetime Warranty



SlimCat™ Network Cabling System

PRO SlimCat

Cat6 RJ45 Keystone Socket

The Kordz **PRO SlimCat™** Cat6 RJ45 Keystone Socket is part of the multi-award-winning PRO SlimCat Network Cable System. It enables professional integrators to deliver ANSI/TIA-568.2-D Cat6 permanent link performance and support PoE++ at 100W when using the 28AWG PRO SlimCat Network Cable. Featuring an ABS clamshell design, toolless metal latching mechanism, and fits standard keystone panel cut-outs these keystones make onsite installation quicker and easier.

- 12 units per box
- Easy to terminate with toolless latching mechanism
- Sturdy and robust ABS clamshell design and construction
- Contacts and wire manager customised for SlimCat 28AWG conductors
- Manufactured with quality materials and using advanced manufacturing methods
- Enables delivery of ANSI/TIA-568.2-D Cat6 permanent link performance
- Kordz Lifetime Warranty



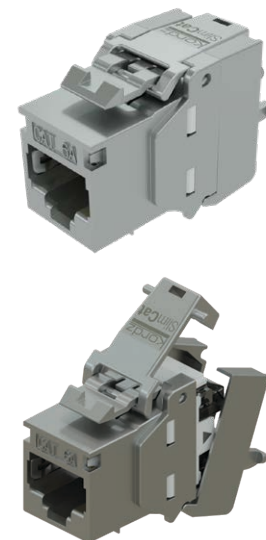
SlimCat™ Network Cabling System

PRS SlimCat

Cat6A RJ45 Keystone Socket

The Kordz **PRS SlimCat™** Cat6A RJ45 Keystone Socket is designed specifically for use with the Kordz PRS SlimCat Network Cable, enabling professional integrators to deliver ANSI/TIA-568.2-D Cat6A permanent link performance and support PoE++ at 100W up to 50 metres. Installation of the PRS SlimCat Cat6A keystones are quick and easy featuring a die-cast zinc-alloy metallic clamshell design, toolless metal latching mechanism and fit standard keystone panel cut-outs.

- 12 units per box
- Easy to terminate with toolless latching mechanism
- Sturdy and robust die-cast zinc-alloy metallic clamshell design and construction
- Contacts and wire manager customised for SlimCat 28AWG conductors
- Manufactured with quality materials and using advanced manufacturing methods
- Enables delivery of ANSI/TIA-568.2-D Cat6A permanent link performance
- IEEE803.2bt 100W PoE++ capable
- Kordz Lifetime Warranty



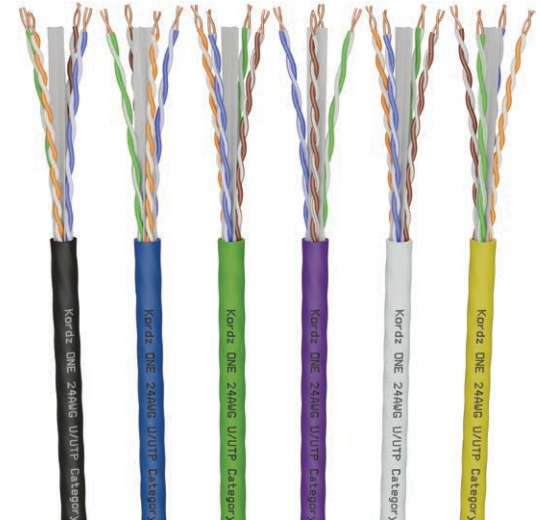
Bulk Network Cable

ONE

Cat6 U/UTP Bulk Network Cable

The Kordz **ONE** Cat6 cable has been designed and engineered to provide any application with a cost-effective, high-bandwidth and high-performance network cabling solution. Tested and approved to exceed 550Mhz, the ONE Series Cat6 cable is HDBaseT™ recommended. Supplied in a 305m professional pull box, the Rapid-EZ reel allows an easy flow of cable from the box, minimising twisting, curling and snags during installation.

- Suitable for 1000BASE-T/1000BASE-TX (Gigabit) & 5GBASE-T, PoE, PoE+ & PoE++
- 24AWG Oxygen-Free Copper conductors with U/UTP 4-pair construction
- PVC Separator Reduces Crosstalk Between Pairs
- Supplied in the durable Rapid-EZ-Reel Packaging - 305m, Metre Marked
- Exceeds ANSI/TIA 568C-2.1 Standard
- LSZH - IEC60332-1 fire rated
- CPR Declared Performance: ONE-Cat6: Dca-s2, d2, a1 (EN 50575:2014+A1:2016)
- 6 Colours Available: Black, Blue, Green, Purple, White & Yellow
- Kordz Lifetime Warranty



Colours Available:



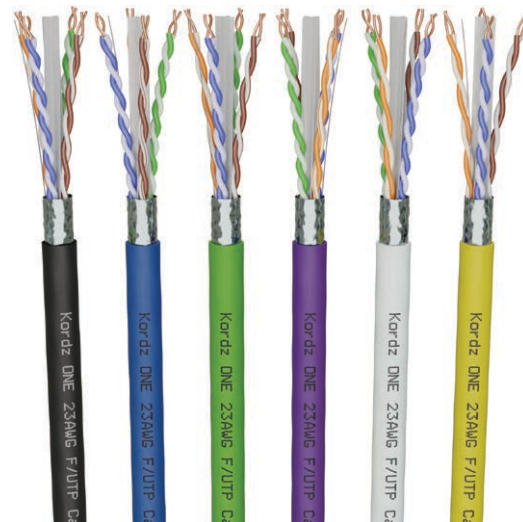
Bulk Network Cable

ONE

Cat6A F/UTP Bulk Network Cable

The Kordz **ONE** Cat6A cable provides a cable system infrastructure with assurance for advanced applications that demand more bandwidth and greater performance than it's Cat6 counter part. This premium shielded, twisted pair (F/UTP) cable, provides industry leading protection required in complex systems from external cable noise sources, also known as alien crosstalk or EMI (electromagnetic interference).

- Suitable for 1000BASE-T/1000BASE-TX (Gigabit) & 10GBASE-T, PoE, PoE+ & PoE++
- 23AWG Oxygen-Free Copper conductors with F/UTP 4-pair construction
- Mylar laminated aluminium tape shielding with a 26AWG drain wire
- PVC Separator Reduces Crosstalk Between Pairs
- Cable length metre marked for convenience
- Exceeds ANSI/TIA 568-C.2 and ISO/IEC 61156-5 standards
- LSZH - IEC60332-3-25 fire rated
- CPR Declared Performance: ONE-Cat6A: Dca-s1, d2, a1 (EN 50575:2014+A1:2016)
- 6 Colours Available: Black, Blue, Green, Purple, White & Yellow
- Kordz Lifetime Warranty



Colours Available:



Bulk Network Cable

ONE

Cat6 Direct Burial Network Cable

The Kordz **ONE** Cat6 Direct Burial Network Cable is the professional grade solution for long-lasting performance in direct burial installations. Designed and engineered for systems integrators, it features a UV-stabilised PE jacket and water-blocking gel filler to withstand harsh underground conditions. Meeting ANSI/TIA-568.2-D Cat6 standards, it supports reliable 1Gbps data transmission up to 100m, 10Gbps up to 55m, and PoE++.

- UV-stabilised PE jacket with water-blocking gel filler for durability in underground installations
- 24AWG solid OFC conductors for reliable and long lasting performance
- ANSI/TIA-568.2-D compliant for 1Gbps up to 100m and 10Gbps up to 55m
- Supports PoE++ up to 100W
- 6.3mm diameter for flexible and easy installation in confined spaces
- Ideal for direct burial applications, such as security cameras, Wi-Fi access points and smart doorbells
- Convenient wooden reel packaging with metre-marked cable for precise installation
- Compatible with existing Kordz Cat6 networking components for streamlined integration
- Kordz quality, as backed by a 5 Year Warranty



Colours Available: 

Bulk Network Cable

ONE

Cat6 U/UTP Outdoor Network Cable

The professional grade Cat 6 Outdoor Cable designed and engineered for systems integrators that's robust, reliable and easy to install. Designed and engineered for systems integrators, it delivers ANSI/TIA-568.2-D compliant performance with robust durability. Featuring a UV-stabilised PE jacket, it withstands harsh weather conditions and meets EU, UK, and Australian standards. Its compact 5.4mm diameter and solid OFC conductors ensure flexibility and easy handling. Supporting 1Gbps performance up to 100m and PoE++ up to 100W, this cable offers reliable connectivity for IP cameras, Wi-Fi access points, and other outdoor devices.

- UV-stabilised PE jacket compliant with EU, UK and AU standards
- 24AWG solid OFC conductors for durable, reliable performance
- ANSI/TIA-568.2-D compliant for 1Gbps up to 100m and 10Gbps up to 55m
- Supports PoE++ up to 100W
- 5.4mm diameter for flexible and compact installation in tight spaces
- Ideal for connecting outdoor IP cameras, Wi-Fi access points and smart doorbells
- Convenient Reel-in-Box packaging with metre-marked cable for precise installation
- Compatible with existing Kordz connecting components for integration ease
- Kordz quality with 5 Year Warranty.



Network Cable Components

ONE

RJ45 Field Termination Crimp & Flush Cut Tool

The Kordz **ONE** RJ45 field termination crimp & flush cut tool has been designed and engineered with heavy duty materials for long lasting use in the field. Featuring a precise RJ45 socket, a wide flush cutting blade and a ratcheting grip allows for an easy, consistent, fast, strong, and reliable on-site termination of any RJ45 style connector.

- Easy to terminate
- Accurate, locking RJ45 socket
- Precise, extra wide flush cutting blade
- Ratchet style grip for confident termination
- Sturdy and robust construction & materials
- Two spare blades included
- Kordz 2 Year Warranty



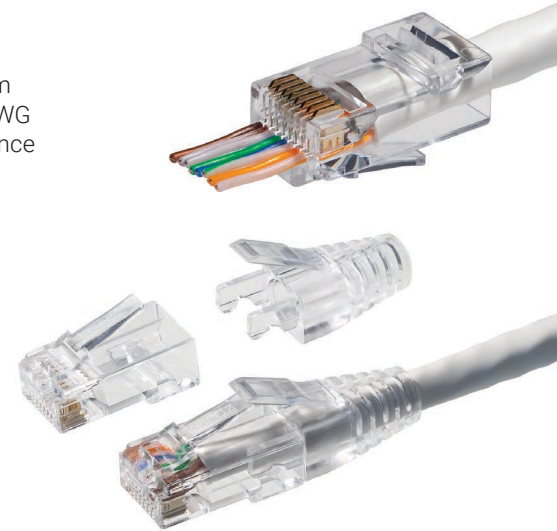
Network Cable Components

ONE

Cat6 RJ45 Push Through Connectors & Strain Reliefs

The Kordz **ONE** Cat6 RJ45 push through connectors and strain reliefs are engineered to maintain electrical and mechanical integrity prolonging overall performance for maximum system uptime. The RJ45 connectors work with both solid and stranded unshielded 24AWG category cables. Featuring a larger cable entry, a wide tapered interior, and reduced distance between the wires and contacts, to create a secure, smooth and repeatable termination.

- 100pcs per jar
- Easy to terminate
- Large cable entry
- Wide, tapered interior for conductor push through
- Reduced distance between wires and contacts
- Manufactured with quality materials
- Kordz Lifetime Warranty



Strain relief sold separately,
available in jars of 100 pcs.



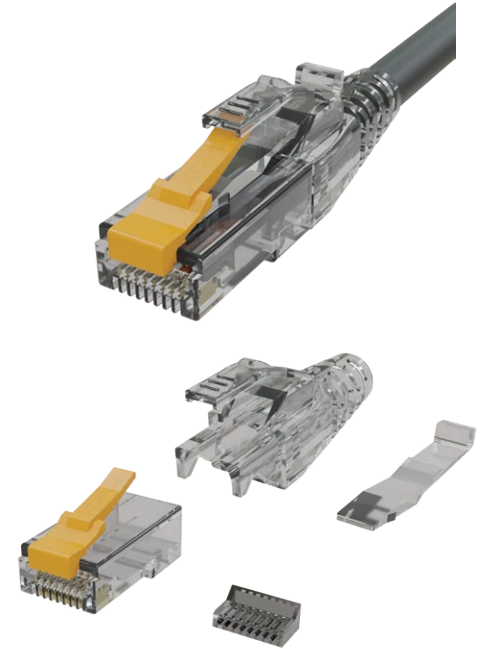
Network Cable Components

PRO

24AWG RJ45 Crimp Connector

The Kordz **PRO** 24AWG RJ45 Crimp Connector has been engineered to deliver robust, long-lasting performance. It features an innovative composite construction that combines the Kordz snap-proof nylon latch with a transparent body for ease of field termination and installation paired with the optional matching Strain Relief and locking pin. Rated for Cat6 and PoE++ performance and backed by the Kordz Lifetime Warranty, the PRO Series 24AWG RJ45 Crimp Connectors are the professional's choice for reliable networking installations.

- ANSI-TIA-568.2-D Category 6 & IEC11801 Class E component performance
- Durable snap-proof nylon connector latch that can withstand over 2,000 bend cycles
- HDBaseT and PoE++ system certifiable termination solution
- IEEE802.3bt 100W PoE++ capable
- Non-push through, two-piece construction with tinted connector body
- Optional strain relief featuring a removable locking pin
- 100% recyclable packaging
- Lifetime Warranty



Network Cable Components

PRS

Toolless Cat6A RJ45 Shielded Plug

The Kordz **PRS** Field Termination RJ45 Plugs perfectly complement Kordz ONE Series Bulk Category Cabling and gives the professional integrator total confidence to deliver an end-to-end cabling solution. Featuring a die-cast alligator style design and advanced manufactured methods, you can match them with Kordz PRS Keystone Sockets for a complete Kordz ecosystem that delivers 'Connectivity Assured'.

- 6 pieces per pack
- Die-cast alligator style design
- Easy to terminate with toolless design
- Sturdy, robust, 360° shielded construction
- Manufactured with quality materials using advanced manufacturing methods
- Kordz Lifetime Warranty



Network Cable Components

PRO

Toolless Cat6 RJ45 Keystone Socket

The Kordz **PRO** Keystone RJ45 Sockets perfectly complement Kordz ONE Series Bulk Category Cabling and gives the professional integrator total confidence to deliver an end-to-end cabling solution. Featuring an ABS clamshell with a metal latching mechanism the Keystone RJ45 Sockets are very easy to fit. Match them with Kordz PRO Patch Cords for a complete Kordz ecosystem that delivers 'Connectivity Assured'.

- 6 pieces per pack
- ABS clamshell design
- Available in black or white
- Easy to terminate with toolless latching mechanism
- Sturdy and robust construction
- Manufactured with quality materials and using advanced manufacturing methods
- Kordz Lifetime Warranty



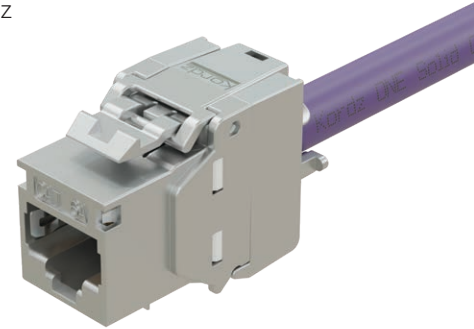
Network Cable Components

PRS

Toolless Cat6A RJ45 Keystone Socket

The Kordz **PRS** Category Cabling Components range allows professional integrators total confidence with an end-to-end cabling solution. The Keystone RJ45 Sockets perfectly complement Kordz ONE Series Bulk Category Cabling. Featuring a die-cast metal clamshell design and a latching mechanism the Keystone RJ45 Sockets are very easy to fit. Match them with Kordz PRS Patch Cords or Plug for a complete Kordz ecosystem that delivers 'Connectivity Assured'.

- 6 pieces per pack
- Die-cast metal clamshell design
- Easy to terminate with toolless latching mechanism
- Sturdy, robust, 360° shielded construction
- Manufactured with quality materials and using advanced manufacturing methods
- Kordz Lifetime Warranty



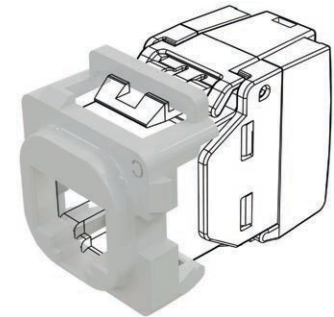
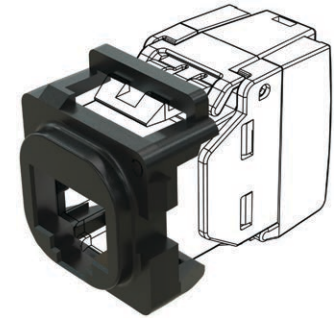
Network Cable Components

PRO

Clipsal® Style Keystone Bezel/Adapter

The Kordz **PRO** Keystone Bezels are made to fit the Kordz Keystone sockets perfectly and allows for easy installation and termination of Kordz Keystone in Clipsal style wall plates. Featuring an ABS injection moulded build, and precise tolerances, easily fit the bezel over the Kordz keystone and into your Clipsal wall plate for a snug and robust wall termination. Available in black and white, sold in packs of 10.

- Sold in packs of 10
- Available in Black & White
- ABS injection moulded body
- Easy snap-on installation
- Precise & snug fitment
- Accurate tolerances for Clipsal® style plates
- Suitable for all Kordz Keystone
- Kordz Lifetime Warranty



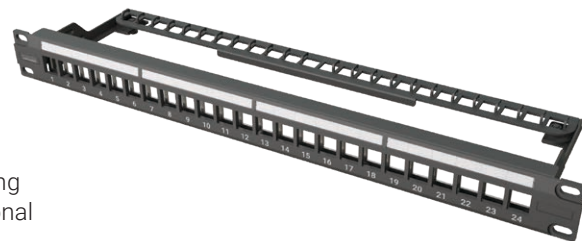
Network Cable Components

PRO

Modular Keystone Patch Panel

The Kordz **PRO** Modular Keystone Patch Panel is a professional grade, shielded 24-port modular panel engineered for seamless integration with Kordz keystones. Its powder-coated metal frame with durable polycarbonate faceplate ensures long-lasting performance, while the optimised design enables hassle-free installation in professional rack environments. Shielded for consistent signal integrity, this 1U panel minimises electromagnetic interference (EMI) for reliable connectivity. Supplied with all required screws, the PRO Patch Panel is the robust and convenient solution for structured cabling projects, completing a Kordz networking ecosystem that's Connectivity Assured.

- Professional-grade 1U, 24-port modular keystone patch panel
- Powder-coated metal frame with durable polycarbonate faceplate
- Optimised for Kordz PRO and PRS keystones for seamless compatibility
- Shielded design with grounding wire included for consistent signal integrity
- Includes all required screws for quick and easy installation
- Ideal for high-density rack setups in residential and commercial environments
- Completes the Kordz networking ecosystem with Connectivity Assured



Keystone sockets sold separately



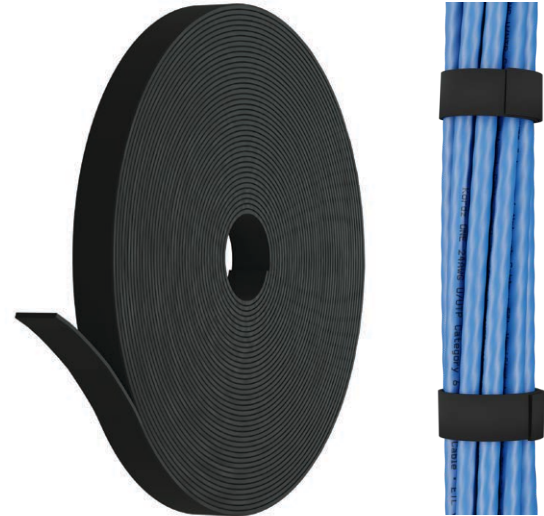
Accessories

PRO

Professional Grade Hook & Loop

The Kordz **PRO** Hook & Loop Cable Ties, are specifically designed to make it easier than ever to dress and organise cables in any professional application. Your cable bundles will be secure, neat and protected using the premium Kordz soft finish, fluff-free, high adhesion Hook and Loop, with a generous 12.5mm width eliminating pinched and damaged cables when tied down. Supplied on a 10m length roll.

- Premium soft finish
- High adhesion without the fluff
- 12.5mm width
- 10m length in resealable foil bag
- Cut to length reel for convenience
- 1kg adhesion for each centimetre of overlap
- Kordz Lifetime Warranty



Width: 12.5mm / 0.5in
Length: 10.0m / 32.8ft

Control Cables

ONE

KNX Certified Control Cable

The Kordz ONE CTRL KNX cable is designed and engineered to meet the exacting requirements of the KNX certification. This professional grade high performance cable designed for systems technicians is supplied in a 305m professional pull box. The Rapid-EZ reel allows the easy flow of cable from the box, whilst also keeping the cable from twisting and curling, minimising snags during installation and saving time.

- KNX Certified: 579/1721/20
- 20AWG x 2 Pairs
- Enhance Pair Geometry with Al – Mylar Shield
- Easy glide outer jacket with meter marks
- Compact Rapid-EZ-Reel packaging
- CPR Dca Fire-rated jacket - LSZH
- Sturdy and robust shielded construction
- Manufactured with quality materials using advanced manufacturing methods
- Kordz Lifetime Warranty



Balanced Audio

ONE

Balanced Audio Cable

The Kordz **ONE** Balanced Audio Cable is engineered to deliver robust audio performance in professional audio installations. It features high-purity stranded OFC conductors and a comprehensive aluminium foil shield for 125% coverage. This ensures minimal signal interference over extended distances. The cable's installation-friendly design, coupled with an LSZH jacket, makes it ideal for versatile installations whether in-wall or exposed.

- High-purity stranded OFC conductors for robust sound transmission
- Comprehensive aluminium foil shielding for maximum interference protection
- Foil shield and drain wire for simplified installation
- Versatile LSZH jacket that's ideal for various installation environments
- Kordz Lifetime Warranty



Balanced Audio

ONE

XLR Connectors

The Kordz **ONE** XLR Connector delivers durability and reliability for professional integrators. Featuring gold-plated solid pins and a robust zinc-alloy shell, this 3-Pin XLR Connector is built to withstand the rigours of frequent use. Engineered to fit perfectly with standard specifications, it ensures seamless compatibility across a range of audio equipment. The connector's solid construction and ease of soldering makes it the ideal choice for professional audio installations.

- Robust zinc-alloy shell and gold-plated solid pins for durability
- Rated for over 5,000 insertion cycles
- Compatible with a wide range of cable diameters
- Compliant with IEC 61076-2-103 standards
- Unique Kordz orange internal pin insert for easy identification
- UL94 V-0 fire rating
- Kordz Lifetime Warranty



Speaker Cable

ONE

Bulk Speaker Cable

The Kordz **ONE** Series speaker cable has been designed and engineered to meet the highest industry standards for AV installation. The Rapid-EZ Reel pro box packaging allows the easy flow of cable from the box, whilst also keeping the cable from twisting and curling, minimising snags during installation and saving time.

- Engineered and constructed to ensure installation success and ease
- 99.99% Oxygen Free Copper (OFC)
- Low Smoke Zero Halogen (LSZH) construction
- Supplied in the durable Rapid-EZ-Reel packaging – 152.5m or 305m, Metre Marked
- Easy strip internal nylon rip cord
- Available in 2 x 12AWG, 2 x 14AWG, 4 x 14AWG, 2 x 16AWG and 4 x 16AWG
- CPR Declared Performance: Eca (EN 50575:2014+A1:2016)
- Industry standard wire colour coding (Red, Black, Green, White)
- Easy glide Black, Purple or Yellow outer jacket
- Kordz Lifetime Warranty



Colours Available:



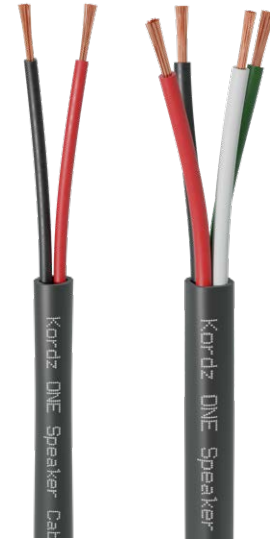
Speaker Cable

ONE

Outdoor Speaker Cable

The Kordz **ONE** Series Outdoor Speaker Cable is engineered for professional AV integrators, delivering reliable, high quality audio in outdoor environments. With 99.99% Oxygen Free Copper conductors, a UV-stabilised polyethylene jacket and polished strands to prevent oxidation, it ensures clear sound and long-term durability. Flexible, metre-marked and packaged in a robust reel box, it's designed for efficient, long-lasting outdoor audio installations.

- UV-stabilised polyethylene jacket engineered for long-term outdoor use
- 99.99% Oxygen Free Copper conductors for high quality audio performance
- Balanced strand count for flexibility and ease of installation
- Polished conductor surface reduces oxidation for long-lasting reliability
- Industry-standard internal colour coding for straightforward termination
- Metre-marked with internal nylon ripcord for quick, precise stripping
- Durable reel-box packaging simplifies transport and deployment
- Compliant with AS/NZS S008:2010 and RoHS standards
- Backed by Kordz 5-Year Warranty for peace of mind



Banana Plugs

ONE

Plastic Rear Entry Banana Plugs

The Kordz **ONE** Series plastic shell, gold plated connector banana plug delivers an enhanced connection for improved signal transfer, safety and reliability. The plug is designed to fit all standard 4mm banana sockets on amplifiers and speakers. Each plug is engineered for ease of installation and colour coded for identification.

- Rear cable entry 4mm banana plug
- 24k gold plated body
- Offset oversized grub screws for superior cable termination
- Accepts up to 10AWG stranded speaker cable
- Moulded plastic back shells eliminates the risk of speaker terminal shorts
- Economy and performance
- Available in bulk trays of 20 plugs for each colour
- Kordz Lifetime Warranty



Banana Plugs

ONE

Gold Side Entry Banana Plugs

The Kordz **ONE** Series 24k gold plated body and connector banana plug, with side entry delivers an enhanced connection for improved signal transfer, safety and reliability. The plug is designed for side entry of speaker cable, allowing the plug to be used in restricted applications. Each plug is engineered for ease of installation and colour coded for identification.

- Side cable entry 4mm banana plug
- 24k gold plated body
- Rear set, oversized thumb screw for superior cable termination
- Accepts up to 10AWG stranded speaker cable
- Premium and performance
- Available in bulk trays of 20 plugs for each colour
- Kordz Lifetime Warranty



HDMI Extenders

PLX

PLX-HDB.3 HDBaseT™ HDMI Extender

The Kordz **PLX-HDB.3** HDBaseT™ extender delivers 4K HDMI, IR, RS-232 and PoC over a single CAT6 cable. The product supports 1080p resolutions up to 70m and 4K 60Hz 4:4:4 up lengths of 40m.

- TX and RX are 16mm thin with all connectors on one side
- Ideal for mounting in tight spaces
- Supports CATx UTP/FTP/STP cable
- 4K60UHD 4:4:4 (18Gbps) to 40m
- 1080p/60 to 70m
- Supports HDMI 2.0 4K60UHD 8-bit colour depth 4:4:4
- Supports HDMI 1.4 4K24UHD HDR 10 colour depth 4:4:4
- Kordz 2 Year Warranty

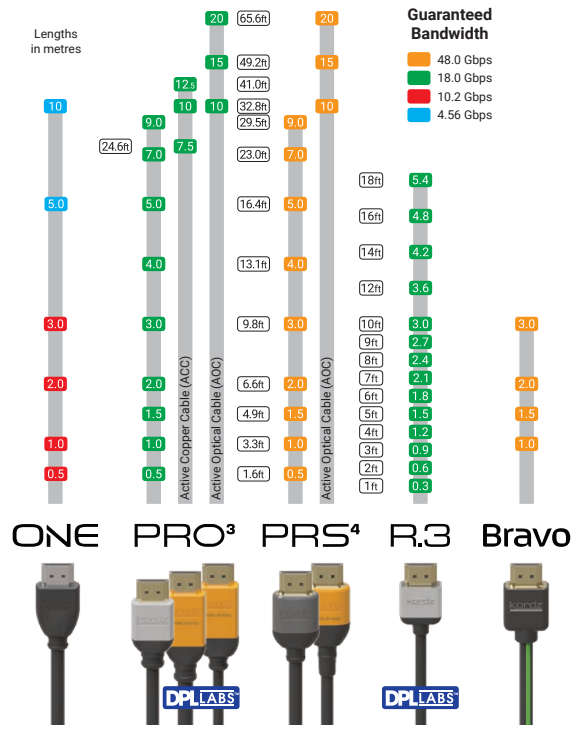


HDBT™
ASE

HDMI®



HDMI - Cable Guide



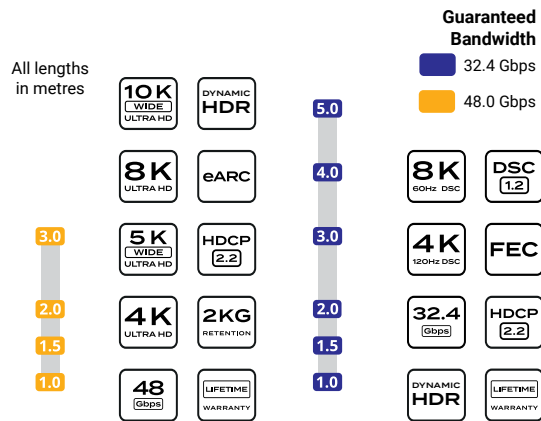
	Resolution	Frame Rate	Color depth (bits)	Chroma Subsampling	HDMI Certified Test Specification	Data Rate (Gbps)
HD*	1920 x 1080p	24	8-bit	4:2:0 / 4:2:2	Standard with Ethernet	2.22
		60		4:4:4 / 4:2:0 / 4:2:2		4.45
HD*	1920 x 1080p	120	8-bit	4:4:4 / 4:2:0 / 4:2:2	High Speed with Ethernet	8.91
4K*	3840 x 2160p	24	8-bit, HDR10 or 12	4:2:0 / 4:2:2		8.91
		24		4:4:4 / RGB		8.91
		60		4:2:0		8.91
4K†	3840 x 2160p	24	HDR12	4:4:4 / RGB	High Speed ** with Ethernet	11.14
			HDR10	4:2:0		11.14
			HDR12	4:2:2		17.82
			8-bit	4:4:4 / RGB		17.82
4K‡	3840 x 2160p	60	HDR10	4:4:4 / RGB	Ultra High Speed	20.05
			HDR12	4:4:4 / RGB		24.06
			8-bit, HDR10 or 12	4:2:0 / 4:2:2		32.08
			8-bit	4:4:4 / RGB		32.08
5K‡	5120 x 2160p	100 / 120	HDR10	4:4:4 / RGB	Ultra High Speed	40.10
			HDR12	4:4:4 / RGB		48.11
			8-bit, HDR10 or 12	4:2:0 / 4:2:2		20.05
			8-bit	4:4:4 / RGB		20.05
8K‡	7680 x 4320p	48 / 60	HDR10	4:4:4 / RGB	Ultra High Speed	25.06
			HDR12	4:4:4 / RGB		30.07
			8-bit, HDR10 or 12	4:2:0 / 4:2:2		40.10
			8-bit	4:4:4 / RGB		40.10
10K‡	10240 x 4320p	100 / 120	HDR10	4:4:4 / RGB	Ultra + DSC	50.12
			HDR12	4:4:4 / RGB		60.14
			8-bit	4:2:0		17.82
			HDR10 or 12	4:2:0 / 4:2:2		32.08
		24 / 30	HDR10	4:4:4 / RGB	Ultra High Speed	40.10
			HDR12	4:4:4 / RGB		48.11
			HDR10	4:2:0		40.10
			HDR12	4:2:0		48.11
		48 / 60	HDR10 or 12	4:2:0 / 4:2:2	Ultra + DSC	64.15
			HDR10	4:4:4 / RGB		80.19
			HDR12	4:4:4 / RGB		96.23
			HDR10 or 12	4:2:0 / 4:2:2		128.30
		100 / 120	HDR10 or 12	4:2:0 / 4:2:2	Ultra High Speed	40.10
			HDR10	4:4:4 / RGB		50.12
			HDR12	4:4:4 / RGB		60.10
			HDR10 or 12	4:2:0 / 4:2:2		80.19
		48 / 60	HDR10	4:4:4 / RGB	Ultra + DSC	100.24
			HDR12	4:4:4 / RGB		120.29
			HDR10	4:2:0		100.24
			HDR12	4:2:0		120.29

* HDMI 1.4 - 2009 † HDMI 2.0 - 2013 ‡ HDMI 2.1 - 2019

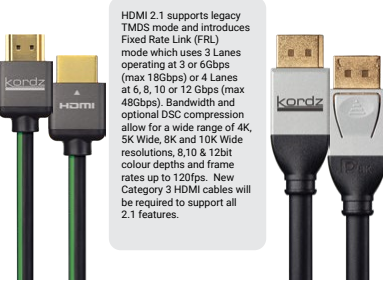
** Although High Speed HDMI CTS is 10.2Gbps, Kordz guarantees 18Gbps for products indicated in green on reverse side of this card.

Copyright © 2023 Kordz Group. HDMI is a registered trademark of HDMI Licensing Administrator, Inc. NPK-2.2.0

8K - Bandwidth Guide



Bravo HDMI **PRO** **DisplayPort**



HDMI 2.1 supports legacy TMDs mode and introduces Fixed Rate Link (FRL) mode which uses 3 Lanes operating at 3 or 6Gbps (max 18Gbps) or 4 Lanes at 6, 8, 10 or 12 Gbps (max 48Gbps). Bandwidth and optional DSC compression allow for a wide range of 4K, 5K Wide, 8K and 10K Wide resolutions, 8,10 and 12bit colour depths and frame rates up to 120fps. New Category 3 HDMI cables will be required to support all 2.1 features.

DisplayPort 1.4 uses the transmission mode HBR3 (32.4 Gbit/s) as introduced in version 1.3 and is still the highest available mode. DisplayPort 1.4 adds support for 4K, 5K & 8K resolutions with frame rates up to 240fps, Display Stream Compression 1.2 (DSC), Forward Error Correction, 8, 10 & 12 bit colour space including static and dynamic HDR. It also includes Rec 2020 colour space for HDMI interoperability. Audio capabilities extend to a maximum number of 32 audio channels.






HDMI	Resolution	Frame Rate	Color depth (bits)	Chroma Subsampling	Speed	Data Rate (Gbps)
HDMI 2.1 - 2019-2020	4K	60	HDR10	4:4:4/RGB	Ultra High Speed	20.05
			HDR12	4:2:0/4:2:2		24.06
		100/120	8, HDR10 or 12 8-bit	4:4:4/RGB		32.08
			HDR10 HDR12	4:2:0/4:2:2		32.08
	5K	48/60	8, HDR10 or 12 8-bit	4:4:4/RGB	Ultra High Speed	40.10
			HDR10 HDR12	4:2:0/4:2:2		48.11
		100/120	8, HDR10 or 12 8-bit	4:2:0/4:2:2		20.05
			HDR10 HDR12	4:4:4/RGB		20.05
		100/120	8, HDR10 or 12 8-bit	4:2:0/4:2:2	Ultra + DSC	25.06
			HDR10 HDR12	4:4:4/RGB		30.07
		24/30	8, HDR10 or 12 8-bit	4:2:0/4:2:2		40.10
			HDR10 HDR12	4:4:4/RGB		40.10
HDMI 2.1 - 2019-2020	8K	24/30	8-bit	4:2:0	Ultra High Speed	17.82
			HDR10 or 12 HDR10 HDR12	4:2:0/4:2:2		32.08
		48/60	8-bit	4:4:4/RGB	Ultra + DSC	40.10
			HDR10 or 12 HDR10 HDR12	4:2:0/4:2:2		48.11
		100/120	8-bit	4:2:0	Ultra High Speed	40.10
			HDR10 or 12 HDR10 HDR12	4:2:0/4:2:2		48.11
	10K	24/30	8-bit	4:2:0	Ultra + DSC	64.15
			HDR10 or 12 HDR10 HDR12	4:2:0/4:2:2		80.19
		100/120	8-bit	4:2:0		96.23
			HDR10 or 12 HDR10 HDR12	4:2:0/4:2:2		128.30

DisplayPort	Resolution	Frame Rate	Color depth (bits)	Chroma Subsampling	DSC 1.2 ^[1]	Data Rate (Gbps)
DisplayPort 1.4 2018-2019	4K	60	8-bit	4:4:4/RGB	No	15.68
		75			No	19.74
		120			DSC or 4:2:2	39.19 or 26.16
		144			DSC or 4:2:0	68.55 or 30.92
	5K	60	8-bit	4:4:4/RGB	No	13.68
		120			DSC or 4:2:0	57.08 or 27.36
		144			DSC	69.30
		240			DSC + 4:2:2	80.91
	8K	60	8-bit	4:4:4/RGB	No	30.60
		120			DSC or 4:2:0	62.06 or 30.60
		144			DSC + 4:2:2	85.28
		144			DSC + 4:2:0	77.56

[1] - Display Stream Compression (DSC 1.2) is a VESA-developed low-latency compression algorithm to overcome the limitations posed by sending high-resolution video over physical media of limited bandwidth. It is a visually lossless low-latency algorithm based on delta PCM coding and YCoCg-R colour space; it allows increased resolutions and colour depths and reduced power consumption.

Speaker - Cable Guide

ONE Speaker Cable Guide

Speaker Cable Options				Rating	Jacket Colour		
Model	Configuration	Cross Section to scale	Spool Length metre-marked	LSZH	Purple	Yellow	Black
ONE-SP122	12AWG (65/30) 2 core OFC 7.5±0.2mm OD		152.5m 500ft	✓	✓	✓	✓
ONE-SP142	14AWG (82/33) 2 core OFC 7.5±0.2mm OD		152.5m 500ft	✓	✓	✓	✓
ONE-SP144	14AWG (82/33) 4 core OFC 8.8±0.2mm OD		152.5m 500ft	✓	✓	✓	✓
ONE-SP162	16AWG (65/34) 2 core OFC 6.0±0.2mm OD		305m 1000ft	✓	✓	✓	✓
ONE-SP164	16AWG (65/34) 4 core OFC 7.0±0.2mm OD		152.5m 500ft	✓	✓	✓	✓






Internal Conductor Colours		
Model	Pair A	Pair B
2 core	Black, Red	—
4 core	Black, Red	Green, White

✓ - Available

- All models in plastic spool box 340H x 265W x 335D (mm).
- 12 cartons per pallet layer, maximum 3 layers per pallet.

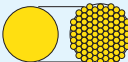
Copyright © 2022 Kordz Group B-A6-EN-202204

Speaker Cable Reference

Selected American Wire Gauge (AWG) Conductor Sizes						Formulae
Solid Conductor	10AWG	12AWG	14AWG	16AWG	18AWG	$d = 0.127\text{mm} \times 92^{\frac{36-\text{AWG}}{39}}$
Cross-section (actual size)						$A = \pi \times (d/2)^2$
Diameter (mm)	2.588	2.053	1.628	1.291	1.024	For inches, substitute 0.127mm with 0.005in
Area (mm²)	5.261	3.309	2.081	1.309	0.823	

Stranded Cores vs. Solid Cores

Speaker cable is often labelled with solid core AWG sizes while actually being constructed with multiple smaller conductor strands to improve flexibility and handling. The combined strands have the same cross-sectional area of conductor material as the equivalent solid core.

Solid Core	Stranded Equivalent	Common Labelling	Area (mm²)	Real-World Measurements Stranded diam. ≈ 105% solid diam. Stranded area ≈ 110% solid area
12AWG	65 × 30AWG	12AWG 65/30	3.309	
14AWG	82 × 33AWG	14AWG 82/33	2.081	
16AWG	65 × 34AWG	16AWG 65/34	1.309	

ONE-SP Electrical Characteristics - Power loss by cable length

Cable Gauge	40 Speaker					80 Speaker				160 Speaker			
	10m 32ft	20m 65ft	40m 131ft	80m 262ft	10m 32ft	20m 65ft	40m 131ft	80m 262ft	10m 32ft	20m 65ft	40m 131ft	80m 262ft	10m 32ft
16AWG	6%	12%	22%	35%	3%	6%	12%	22%	2%	3%	6%	12%	16AWG ≤ 13.7 Ω/km
14AWG	4%	8%	15%	26%	2%	4%	8%	15%	1%	2%	4%	8%	14AWG ≤ 8.62 Ω/km
12AWG	3%	5%	10%	18%	1%	3%	5%	10%	<1%	1%	3%	5%	12AWG ≤ 5.64 Ω/km

Above figures are based on copper resistivity at 20°C (68°F). Resistivity and cable power loss both increase with temperature. For example, driving a 40 speaker over 80m of 16AWG cable loses 35% power (-1.9dB) at 20°C (68°F) and 39% (-2.1dB) at 75°C (167°F).

Power loss % to dB conversion	5%	10%	15%	20%	25%	30%	35%	40%
	-0.2dB	-0.5dB	-0.7dB	-1.0dB	-1.2dB	-1.5dB	-1.9dB	-2.2dB

Copyright © 2022 Kordz Group B-A6-EN-202204

Cat6/6A - Cable Guide

ONE Underterminated Network Cabling

Models Available	Class	Construction		Spool Length	Jacket Options	
		Type	Conductors		Rating	Colour
ONE-CAT6	CAT 6	U/UTP	Solid OFC 24AWG	305m 1000ft	LSZH or UL CM	Blue Green Purple
ONE-CAT6A	CAT 6A	F/UTP	Solid OFC 23AWG	152.5m 500ft		Yellow White

ONE Series CAT6 Network Cable is:

Model: K13002-305M-XX



Common Construction Names (ISO/IEC 11801 Annex E)		
Name	Cable Shielding	Twisted Pair Shielding
U/UTP	—	—
U/FTP	—	Foil
F/UTP	Foil	—
S/UTP	Braiding	—
SF/UTP	Braiding + Foil	—
F/FTP	Foil	Foil
S/FTP	Braiding	Foil
SF/FTP	Braiding + Foil	Foil

Compliance - LSZH models

CPR Declared Performance:

ONE-CAT 6: Dca-s2,d2,a1 (EN 50575:2014+A1:2016)

ONE-CAT 6A: Dca-s1,d2,a1 (EN 50575:2014+A1:2016)

Copyright © 2020 Kordz Group



C-A6-EN-202001

Ethernet over Copper Reference Guide

Ethernet Standard	Twisted Pair Cable		Data ¹ Bandwidth (Mbit/s)	Bits/Hz	Spectral Bandwidth (MHz)	Data lanes per direction
	Name	Rating (MHz)				
40GBASE-T	CAT 8	2,000	40,000	6.25	1,600	4 lanes ²
25GBASE-T			25,000	6.25	1,000	
10GBASE-T	CAT 6A	500	10,000	6.25	400	
5GBASE-T	CAT 6	250	5,000	6.25	200	
2.5GBASE-T	CAT 5e	100	2,500	6.25	100	
1000BASE-T			1,000	4	100	1 lane ³
100BASE-TX	CAT 5	100	100	3.2	100	
10BASE-T	CAT 3	16	10	1	10	

- Effective data bandwidth (after encoding overhead) is calculated as:
 $\text{Bits/Hz} \times \text{Spectral Bandwidth} \times \text{Data lanes per direction}$.
- All four twisted pairs operate at full duplex (thus 4 lanes per direction)
- One twisted pair operates TX at half duplex and another operates RX at half duplex. Two twisted pairs are unused.

Ethernet Standard	Maximum Run Length			What About CAT 7 / 7a Cables?
	<30m	<55m	<100m	
40GBASE-T	CAT 8	—	—	<p>These were originally intended for 10GBASE-T and higher but were supplanted by Cat 6a for 10GBASE-T and bypassed by the 25 and 40GBASE-T standards.</p> <p>Cat 7 is rated to 600MHz and Cat 7a is rated to 1000MHz.</p> <p>The twisted pairs are individually shielded and the cables are shielded overall, providing better resistance to crosstalk.</p> <p>CAT7/7a cables are not ratified by TIA/EIA & hence doesn't appear in the cable guide charts.</p>
25GBASE-T	CAT 8	—	—	
10GBASE-T	CAT 5e/6	CAT 6	CAT 6A	
5GBASE-T	CAT 5e	CAT 5e/6	CAT 6	
2.5GBASE-T	CAT 5e	CAT 5e	CAT 5e	
1000BASE-T	CAT 5e	CAT 5e	CAT 5e	

Lengths as recommended by 802.3x standards. It is generally possible to use lower rated cables for shorter runs.

Copyright © 2020 Kordz Group

C-A6-EN-202001

Kordz - Global Offices

kordz
Connectivity Assured

USA

Future Ready Solutions
24551 Production Circle
Suite 2 Bonita Springs
FL 34135, USA
info@futurereadysolutions.com

kordz
Connectivity Assured

EU/UK

The Service Station Melton Road Hickling Pasture Nottinghamshire LE14 3QG United Kingdom sales@kordz.co.uk	Calle Oro 45, Nave 10 28770 Colmenar Viejo Madrid, Spain sales@kordz.co.uk
---------------------------------------------------------------------------------------------------------------------------------------------------------------------	-------------------------------------------------------------------------------------------------------------------------------

kordz
Connectivity Assured

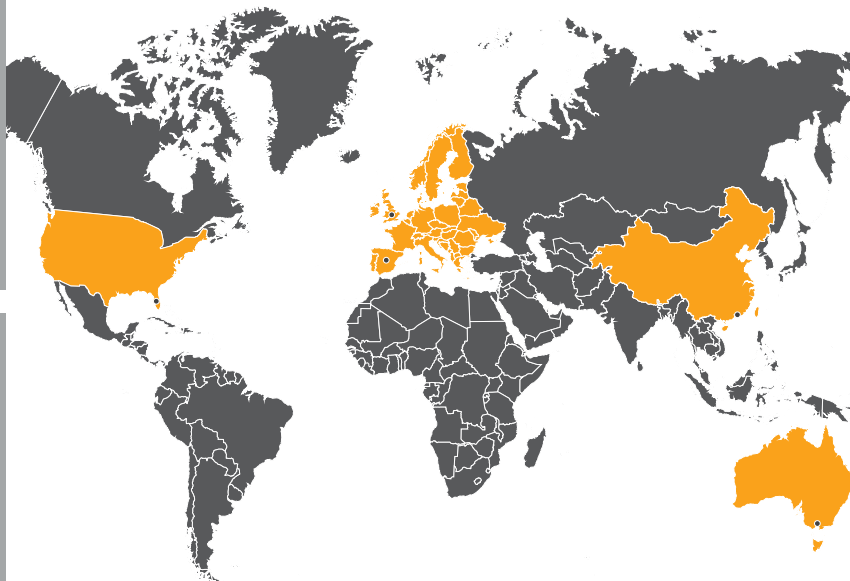
HONG KONG

Unit C, 3/F.
Houston Industrial Building
32-40 Wang Lung Street
Tsuen Wan
New Territories
Hong Kong
orders@kordz.com

kordz
Connectivity Assured

AUSTRALIA

1/7 Sir Laurence Drive,
Seaford,
Victoria,
3198,
Australia
wholesale@kordz.com



Tech Icon Glossary



Gigabits per Second is a measurement of data or network transmission speed. 4.56Gbps indicates that the speed of a cable or device is capable of transferring or receiving is 4.56 Gigabits per Second. For HDMI this is the speed to achieve the HDMI Standard Speed Certification.



10.2Gbps is the speed required in the HDMI 1.4 standard. Gigabits per Second is a measurement of data or network transmission speed. 10.2Gbps indicates that the speed of a cable or device is capable of transferring or receiving is 10.2 Gigabits of data per Second.



18Gbps is the speed required in the HDMI 2.0 standard. Gigabits per Second is a measurement of data or network transmission speed. 18Gbps indicates that the speed of a cable or device is capable of transferring or receiving is 18 Gigabits of data per Second.



32.4Gbps is a speed most commonly seen for DisplayPort™ 1.4 cables and devices. Gigabits per Second is a measurement of data or network transmission speed. 32.4Gbps indicates that the speed of a cable or device is capable of transferring or receiving is 32.4 Gigabits of data per Second.



48Gbps is the latest speed for the newest HDMI standard, HDMI 2.1. Gigabits per Second is a measurement of data or network transmission speed. 48Gbps indicates that the speed of a cable or device is capable of transferring or receiving is 48 Gigabits of data per Second.



A resolution of 1080p and frame rate of 60fps, equalling 4.45Gbps, is achievable up to 10 meter lengths. The Kordz ONE Series HDMI is capable of this speed up to 10 meters.



4K Ultra HD refers to a horizontal screen display or image resolution in the order of 4,000 pixels. The most common 4K UHD resolution is 3,840 x 2,160 pixels. A 4K Ultra HD image has 8.3 million pixels (8.3 Megapixels). Specifications of 4K UHD varies in professional fields and thus results in different definitions of horizontal pixels x vertical pixels.



This icon states that this HDMI cable is capable of transmitting 4K Ultra HD signal up to 3 meters. Equalling at least 10.2Gbps bandwidth or more, up to 3 meters.



4K 60Hz 4:4:4, refers to the resolution of 4K Ultra HD (3,840 x 2,169 Pixels) + Frame Rate or Refresh rate of 60 Hertz + the Chroma Sub-sampling of 4:4:4, equalling a 17.82Gbps bandwidth. Any cable or device with this icon can achieve a minimum bandwidth speed of 17.82 Gbps.



8K Ultra HD refers to a horizontal screen display or image resolution of approx. 8,000 pixels. The most common 8K UHD resolution is 7,680 x 4,320 pixels. An 8K Ultra HD image has 33.2 million pixels (33.2 Megapixels). Specifications of 8K UHD varies in professional fields and thus results in different definitions of horizontal pixels x vertical pixels.

Tech Icon Glossary



10K Ultra High Definition refers to a horizontal screen display or image resolution of approx. 10,000 pixels. The most common resolution of 10K UHD is the wide format of 10,240 x 4,320 which equates to just over 44 million pixels (44 Megapixels).



The cable or device is capable to transmit 4K video at 60 frames per second with 4:4:4 chroma sub-sampling up to 40 meters. This equates to approximately 18 Gbps.



The connector on this cable requires a minimum of 1kg of force to remove it from the connected device.



The connector on this cable requires a minimum of 2kg of force to remove it from the connected device.



The Kordz 2 Year Warranty means that the associated product is covered under warranty for 2 years from date of purchase. Refer to www.kordz.com.au/warranty for more information.



22 American Wire Gauge, also referred to as 22AWG, refers to the thickness of the conductors used inside a cable. The higher the number the thinner the conductor. 22AWG refers to a conductor being 0.64mm thick in its total diameter.



24 American Wire Gauge, also referred to as 24AWG, refers to the thickness of the conductors used inside a cable. The higher the number the thinner the conductor. 24AWG refers to a conductor being 0.51mm thick in its total diameter.



28 American Wire Gauge, also referred to as 28AWG, refers to the thickness of the conductors used inside a cable. The higher the number the thinner the conductor. 28AWG refers to a conductor being 0.32mm thick in its total diameter.



3-Pin refers to the number of pins or contact points a connector or socket uses to interface with each other. 3-Pin XLR is typically used for mono balanced audio lines/cables/connections.



55ohms refers to the resistance of the cable. RCA cables with a 55ohm coaxial conductor resistance are optimised for analogue audio.

Tech Icon Glossary

75Ω

75ohms refers to the resistance of the cable. RCA cables with a 75ohm coaxial conductor resistance are optimised for S/PDIF digital audio.

ALLM

Auto Low Latency Mode, also referred to as ALLM, enables the ideal latency setting to automatically be set allowing for smooth, lag-free and uninterrupted viewing and interactivity. This setting usually has to be set manually which involves going through menus but this HDMI 2.1a feature allows a game console, PC or other device to control the setting.

ARC

Audio Return Channel, also referred to as ARC, is a feature that allows for two-way communication of audio between a device like a television and a receiver or other device, as opposed to only sending audio from a source such as a Blu-Ray player to a television. ARC supports up to audio 8 channels, for 7.1 channel audio.

eARC

Enhanced Audio Return Channel, also referred to as eARC, is the next iteration after ARC. eARC works similarly to ARC, but will support up to 32 audio channels of high resolution 192Hz/24b audio, allowing audio formats such as Dolby ATMOS, DTS:X and Auro3D to be used for a greater listening experience.

BALANCED AUDIO

Balanced audio is a method of interconnecting audio equipment that reduces a cable's susceptibility to external noise caused by electromagnetic interference. Using typically 3 conductors - Positive and Negative, carrying duplicate signals in opposite polarities for clean audio transmission and Ground, to act as an outer shield against interference.

BELTPAK

BeltPak is Kordz' innovative eco-friendly bulk packaging solution for terminated cables like patch cords and HDMI cables. The packaging solution comprises of 100% recyclable paper material, in a compact "belt" of 10 perforated tear-off packs.

CAT 6

The Category 6 standard, also referred to as Cat6, is the sixth generation of twisted pair ethernet cabling that is used in ethernet and other network data communication. The Cat6 standard specifies performance of a minimum 250MHz or 1 Gigabit per second data transfer speeds. Cat6 has more stringent specifications for crosstalk and system noise than Cat5 and Cat5E.

**CAT6
UP TO
50M**

Cat6 up to 50 metres, means that the cable/component is rated to support the Cat6 performance standard of a minimum 250MHz or 1 Gigabit per Second data transfer speed up to 50 metres using a single cable run.

CAT 6A

The Category 6 Augmented standard, also referred to as Cat6A, was created to further improve the performance of Cat6 Ethernet cables. The Cat6A standard specifies performance of a minimum 500MHz or 10 Gigabit per Second data transfer speeds and improved alien crosstalk resistance characteristics, over the Cat6 standard. (Usually containing more shielding)

**CAT6A
UP TO
50M**

Cat6A up to 50 metres means that the cable/component is rated to support the Cat6A performance standard of a minimum 500MHz or 10 Gigabit per Second data transfer speed and crosstalk resistance up to 50 metres using a single cable run.

Tech Icon Glossary



Display Stream Compression version 1.2, also referred to as DSC 1.2, is a video compression scheme developed by VESA which enables 3:1 compression over HDMI and DisplayPort. DSC is considered lossless and enables higher resolutions and frame rates to be transported over cables otherwise unable to do so.



This icon denotes two different types of shielding in the cable in order to minimise EMI and RMF interference.



Dynamic HDR is the next evolution of HDR video. Standard HDR, works by setting one level of dynamic range when the viewing begins and remains in that state. Dynamic HDR allows different dynamic range levels to be set on a frame by frame basis, which allows for more efficient video transport and more impactful uses of HDR during the content viewing.



HDR stands for High Dynamic Range. It enables displays to show a greater range colours and contrast between the black and white levels and on a display. The greater the dynamic range, the more detail one can see in an image. There are various versions of HDR, the most common forms are HDR10, HDR12, & Dolby Vision.



F/UTP defines the amount and type of shielding on a cable. F/UTP shielded cables have an outer shielding layer, but the twisted pairs do not have any individual shielding.



Forward Error Correction, also referred to as FEC, is a transmission scheme/protocol used to prevent errors before they occur which allows for a more reliable signal.



Gel Filled means that the cable is filled with a high quality, water resistant gel, sealing all gaps and recesses through the structure and coating the interior wire insulating layers to prevent fluid propagation, repel moisture and reduce conductor damage. Making the cable perfect for direct burial applications



Halogen Free Fire Rated or HFFR means that a cable's sheath material substitutes the halogen content found in common sheath materials for non-toxic elements such as aluminium. This is done in order to minimise the exhaust of toxic fumes in the case of a fire.



HDBaseT™ is a proprietary format of transporting uncompressed HD and UHD video over Ethernet. Founded by Valens, HDBaseT™ enables ease of distributing HD and UHD quality video over longer distances via Ethernet cabling and HDBaseT™ devices.



High Bandwidth Digital Content Protection, also referred to as HDCP, is a copyright protection, encryption technology which is embedded in HDMI and DisplayPort™. HDCP 2.2 was released in 2015 and is backwards compatible. Devices requiring HDCP 2.2 must have a 2.2 compliant ecosystem from the source all the way to the device.

Tech Icon Glossary



HDMI 2.0 is the tenth revision of HDMI standards. HDMI 2.0 cables and devices must be able to transmit a minimum of 18Gbps (Gigabits per second). This was the first HDMI revision that truly allowed for the full 4K Ultra HD video bandwidth. HDMI later added High Dynamic Range to the standard in the 2.0a and 2.0b revisions.



HEAC stands for HDMI Ethernet/Audio Return Channel. Beyond ARC, HDMI 1.4 also added Ethernet support. This enabled two-way internet connections via HDMI if one device has an established Ethernet connection. This is particularly useful if a display needs an Ethernet connection and a source, which is HEAC compatible, is already connected.



High Frame Rate, also referred to as HFR, is generally attached to content, recording technology or display technology that can refresh faster than 24 frames per second. High frame rates can be upwards of 120-240fps in some cases.



The Kordz Lifetime Warranty means that the associated product is covered under warranty and promises maintained product functionality and performance for **your** lifetime. Refer to www.kordz.com.au/warranty for more information.



LSZH stands for Low Smoke Zero Halogen. LSZH cable jacketing is composed of thermoplastic or thermoset compounds that emit limited smoke and no halogens when exposed to high sources of heat or fire. This fire rating prevents the loss of visibility due to smoke, and toxic halogen gases being produced by combustion.



OFC 99% or Oxygen Free Copper 99% refers to the copper material used as the conductors within a cable being 99% free of oxygen. Oxygen free copper is a premium grade of copper that has a high level of conductivity, the oxygen content of copper affects its electrical properties and can reduce conductivity.



Power-over-Cable, also referred to as PoC, is a non standardised system of power delivery through CAT cables and is used on proprietary systems or devices. Supplying simultaneous power and data signals over CAT cable to meet specific voltage needs of a product/system, which may be lower or higher than voltage range of PoE.



Power over Ethernet, also referred to as PoE is an electrical industry standard which allows power to be transmitted simultaneously with data signals over CAT cable, allowing devices to operate without the need of a separate power supply. PoE++ provides up to 100watts at 52-57V, PoE+ provides up to 30watts at 50-57V, PoE provides up to 15.4 watts at 37-57V.



Polyvinyl Chloride free, also referred to as PVC free, means that the cable and cable jacket does not contain any PVC materials. PVC is one of the most common cable jacket materials used, and when burned will release gases that can become acidic smoke which is harmful and may cause long lasting damage to a person or building.



Quick Frame Transport, also referred to as QFT, transports each frame at a higher rate to decrease "display latency", which is the amount of time between a frame being ready for transport in the GPU and that frame being completely displayed. This HDMI 2.1a feature reduces latency for smoother no-lag gaming, and other real-time interactive media.

Tech Icon Glossary



Quick Media Switching, also referred to as QMS, is a HDMI 2.1a feature that eliminates A/V blackouts by using the VRR technology to change video modes and frame rates seamlessly. Allowing instant changes from 24Hz to 60Hz frame rate, and anywhere in-between the viewer never sees blank screens and gets a seamless experience.



The RCA connector is a type of electrical connector commonly used to carry audio and video signals over a coaxial cable. The name RCA derives from the company Radio Corporation of America, which introduced the design in the 1930s.



RJ45 stands for 'Registered Jack 45'. This means that the cable, connector, or product uses standardised networking interface. RJ45 standard is most commonly seen in networking and ethernet cables, connectors, sockets etc.



The Shielded tech icon means that the associated cable or product has some form of shielding applied to it's construction. Typically reducing noise and interference from disrupting the transmission of data or digital signal. There are many different types of shielding, and will be specified in the associated products specifications.



The SlimCat™ range from Kordz includes all 28AWG network cabling cables and components, from Kordz patch cords to the unterminated bulk 28AWG network cables. 28AWG SlimCat cabling systems are thinner, more flexible and easier to install, saving precious time and space over traditional network cabling systems.



The Snap Proof mechanism is Kordz' patented RJ45 connector latch made from nylon material, allowing the latch to be bent to any angle for at least 2000 bend cycles before any noticeable wear & tear appears. This Snap Proof latch technology can be found on many Kordz RJ45 termination products like the Kordz Patch Cords & some Crimp Connectors.



The SureFit Connector technology is Kordz' guarantee that the TOSLink connector has been designed and manufactured to highly accurate tolerances of the TOSLink specifications, allowing for the ideal contact and signal transmission through the connector when plugged in to a TOSLink device.



Up To 7.1 Channel Audio means that a cable is capable of up to 7.1 (8 channels) of audio transmission. 7.1 surround sound is the common name for an eight-channel surround sound audio system commonly used in home theatre configurations, that include 7 speaker channels and 1 channel.



The Toolless tech icon means that the associated product does not require any specialised tools or equipment to be used or function. This icon will be seen on products that may usually be expected to be used with some type of tool or equipment.



TOSLink is an optical digital audio cable, originally designed by Toshiba. TOSLink is easily identified by its square shaped connector. It is used to transmit digital audio via S/PDIF (Sony Phillips Digital Interface) from a device or display to a receiver.

Tech Icon Glossary



U/FTP defines the amount and type of shielding on a cable. U/FTP shielded cables do not have an outer shielding, but each twisted pair is individually foil shielded.



U/UTP defines the amount and type of shielding on a cable. U/UTP shielded cables do not have an outer shielding or any twisted pair shielding.



The CM Fire Rating is a specification as part of the UL 1685 standard, for general purpose communication/data cables installed inside walls. The CM Fire Rating specifies that a cable has passed a standardised flammability test to ensure the cable does not burn past 2.44m vertically and has been certified by an accredited laboratory.



The CMG Fire Rating is a specification as part of the UL 1685 standard, for general purpose communication/data cables installed inside walls. The CMG Fire Rating specifies that a cable has passed a standardised flammability test to ensure the cable does not burn past 1.5m vertically and has been certified by an accredited laboratory.



UL94 is a plastics flammability standard. The UL94 V-0 Classification specifies that the plastic material tested must not have any flaming drips produced and must stop burning within 10 seconds during a vertical burn.



The Un-Shielded tech icon means that the associated cable or product does not have any form of shielding applied to it's construction.



Ultra Violet (UV) Stabilised means that there has been a stabiliser added to the cable jacket or product material to allow it to protect from the long-term degradation that may be caused from exposure to UV light. UV stabilisers work by absorbing and/or screening out UV radiation and preventing damage.



Variable Refresh Rate, also referred to as VRR, is a feature that allows content to be displayed in different frame rates during a single viewing session. This reduces or eliminates lag, stutter and frame tearing for more fluid motion in games and media.



The Wooden Reel tech icon means that the bulk cable product is supplied on a standardised wooden reel. This reel will need to be used with a standard a frame spool dispenser or similar.



External Line Return or XLR describes a type of electrical connector most commonly used in professional audio (balanced audio), video and stage lighting applications.

Professional grade cabling products

designed for systems
technicians.

Discover more about Kordz

www.kordz.com.au





www.kordz.com.au